



DATA BOOK

2013-2014

Table of Contents

Foreword.....	2
Elmhurst College Fast Facts.....	3
Enrollment by Academic Level & Full-Time/Part-Time Status.....	4
Fall & Summer Enrollment Chart.....	5
Enrollment by Ethnicity & Gender.....	6
Enrollment by Class Level.....	7
Enrollment by Department.....	8
Enrollment by First & Second Majors.....	10
Student Full-Time Equivalent (FTE).....	13
Full-Time/Part-Time Faculty, Student-Faculty Ratio & Class Size.....	14
Credit Hours Earned by Department.....	15
Admissions.....	17
Academic Profile of New Freshmen & Transfers.....	18
Demographic Profile of New Freshmen & Transfers.....	19
Undergraduate Degrees Awarded.....	20
Graduate Degrees Awarded.....	22
One-Year Fall to Fall Retention Rates.....	23
Six-Year Graduation Rates.....	24
Undergraduate Activities & Characteristics.....	26
Cost of Attendance.....	27
Employees 2012/2013.....	28
Employees 2007/2008 to 2011/2012.....	29
Alumni Information.....	30

Foreword

Welcome to the Elmhurst College 2013-2014 Data Book!

This data booklet is a compilation of statistical information frequently requested by the Elmhurst College community. It primarily includes information about student enrollment, student full-time equivalent (FTE), faculty, admissions, degrees awarded, retention rates, graduation rates, cost of attendance, employees, and alumni. In most cases, five-year trend data, including the most recent Fall 2013 data, are provided.

The Data Book is prepared by the Office of Information Services. If you have any questions about the Data Book, or if you need any institutional data not found here, please feel free to contact Yanli Ma (yanlima@elmhurst.edu) or Jim Kulich (jimk@elmhurst.edu). Additionally, you can view consumer information about Elmhurst College as required by the Higher Education Act at <http://public.elmhurst.edu/about/201677131.html>.

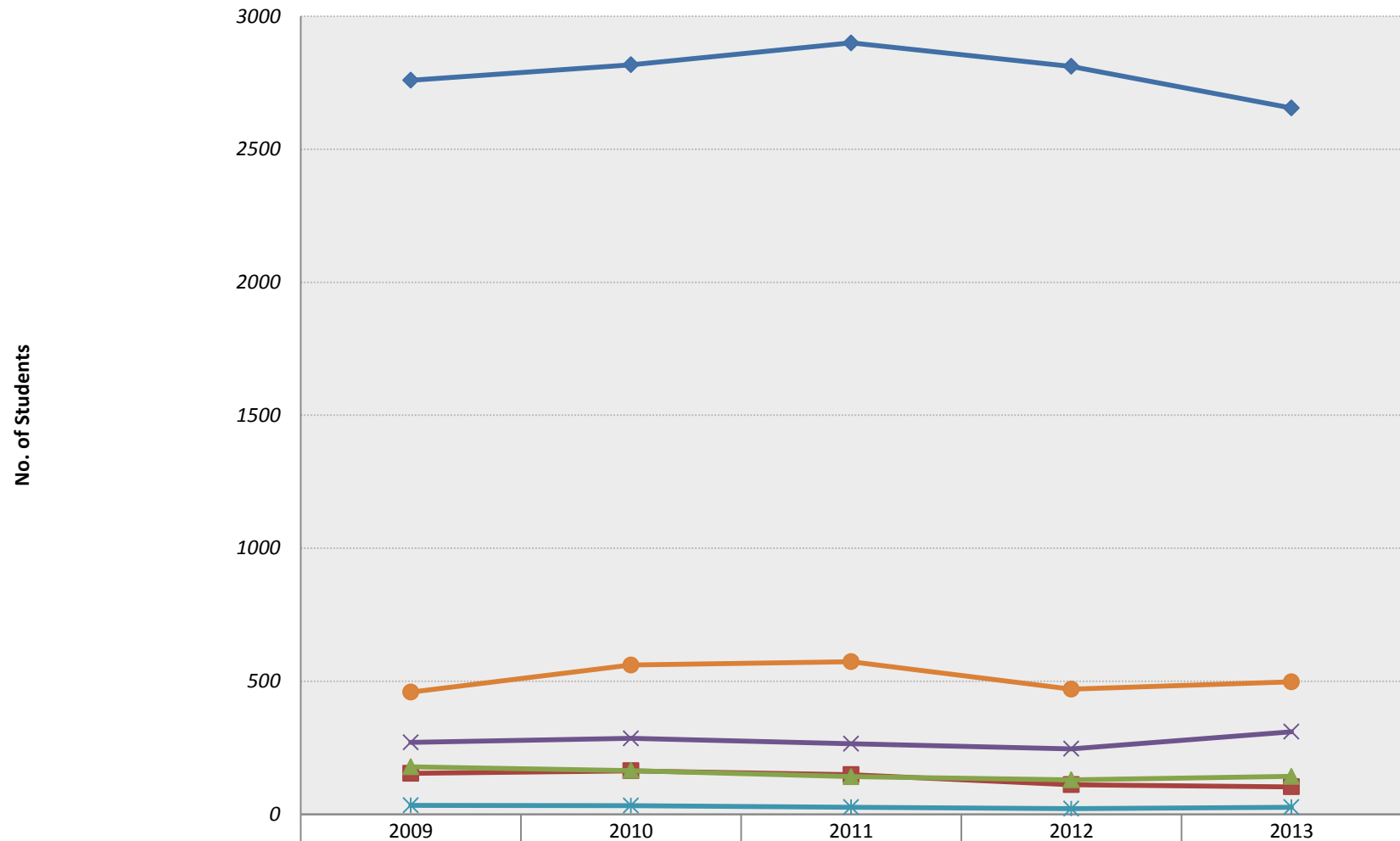
Elmhurst College Fast Facts: 2009 - 2013

Key Indicator	2009	2010	2011	2012	2013
Students in Traditional Full-Time Programs, Fall Term					
New Freshmen	584	538	608	560	506
New Transfers	267	319	309	309	271
Continuing/Returning	1909	1961	1983	1943	1878
Total Traditional Full-Time Programs	2760	2818	2900	2812	2655
Students in Part-Time and Special Programs, Fall Term					
Traditional Part-Time Programs	154	163	149	111	103
Accelerated Undergraduate Programs	178	164	141	129	142
Graduate Programs	270	285	265	246	310
Total Part-Time and Special Programs	602	612	555	486	555
Total Student Headcount Enrollment, Fall Term	3362	3430	3455	3298	3210
Total Student Full-Time Equivalent (FTE), Fall Term					
IBHE/IPEDS Method	3265	3313	3350	3196	3110
Internal Method	3023	3082	3134	3017	2912
Full-Time + 1/3 Part-Time Method	3036	3094	3145	3021	2925
Summer Term Enrollment	459	561	573	470	498
Retention Rate (Freshman to Sophomore Year)	83%	77%	80%	78%	78%
Graduation Rate (Six Years)	70%	69%	70%	74%	74%
Resident Students	1162	1134	1090	1086	1059
Student Athletes (unduplicated headcount)	439	420	479	452	475
Profile of New Undergraduate Students					
New Freshmen High School G.P.A.	3.37	3.39	3.41	3.40	3.32
Average ACT Composite	23.9	24.1	24.1	24.0	23.8
Percent of Students of Color	20%	17%	33%	34%	33%
Percent of First-Generation Students	26%	26%	27%	30%	23%
New Transfers College G.P.A.	3.27	3.19	3.26	3.20	3.19
Full-Time Teaching Faculty	134	136	141	151	159
Endowment (June 30 Market Value)	\$72,708,893	\$76,976,852	\$91,967,891	\$85,212,045	\$91,580,106

Enrollment Headcount by Academic Level & Full-Time/Part-Time Status: Fall 2009 - Fall 2013

	2009	2010	2011	2012	2013
<u>Traditional Full-Time Undergraduate Programs</u>					
New Freshmen	584	538	608	560	506
New Transfers & Other	267	319	309	309	271
Continuing/Returning Students	1909	1961	1983	1943	1878
Total Traditional Full-Time Students	2760	2818	2900	2812	2655
<u>Traditional Part-Time, Accelerated, & Graduate Programs</u>					
Traditional Part-Time Undergraduate Students	154	163	149	111	103
Students in Accelerated Programs	178	164	141	129	142
Graduate Students	270	285	265	246	310
Total Traditional Part-Time, Accelerated & Graduate Students	602	612	555	486	555
 Total Headcount	 3362	 3430	 3455	 3298	 3210
 Of total headcount, Degree-Seeking Undergraduate Students					
Full-Time	2835	2872	2939	2833	2719
Part-Time	171	160	158	122	100
Total	3006	3032	3097	2955	2819

Fall & Summer Enrollment: Calendar Year 2009-2013



◆ Fall Traditional Full-Time	2760	2818	2900	2812	2655
■ Fall Traditional Part-Time	154	163	149	111	103
▲ Fall Accelerated	178	164	141	129	142
✕ Fall Graduate	270	285	265	246	310
✱ Fall ELSA	33	32	26	21	26
● Summer Students	459	561	573	470	498

Enrollment Headcount by Ethnicity, Gender & Academic Level: Fall 2009 - Fall 2013

Ethnicity	Academic Level	2009			2010			2011			2012			2013		
		Female	Male	Total	Female	Male	Total	Female	Male	Total	Female	Male	Total	Female	Male	Total
African American	<i>Undergrad</i>	61	53	114	56	47	103	70	55	125	74	73	147	72	62	134
	<i>Graduate</i>	13	5	18	11	6	17	13	7	20	17	7	24	21	8	29
American Indian/Alaskan Native	<i>Undergrad</i>	6	9	15	7	8	15	11	6	17	7	4	11	6	3	9
	<i>Graduate</i>	0	0	0	0	0	0	0	0	0	0	0	0	0	0	0
Asian	<i>Undergrad</i>	77	44	121	74	43	117	94	39	133	93	34	127	88	45	133
	<i>Graduate</i>	5	5	10	14	5	19	17	1	18	15	5	20	12	6	18
Hawaiian-Pacific Islander	<i>Undergrad</i>	2	1	3	4	1	5	6	3	9	8	4	12	4	0	4
	<i>Graduate</i>	0	0	0	0	0	0	0	0	0	0	0	0	2	0	2
Hispanic	<i>Undergrad</i>	158	85	243	149	84	233	201	106	307	213	125	338	230	134	364
	<i>Graduate</i>	3	6	9	7	7	14	6	5	11	7	7	14	11	2	13
Nonresident Alien	<i>Undergrad</i>	19	14	33	29	12	41	15	6	21	17	11	28	10	4	14
	<i>Graduate</i>	0	2	2	0	1	1	1	3	4	2	3	5	4	3	7
Multiracial	<i>Undergrad</i>	26	27	53	27	21	48	38	19	57	44	22	66	48	34	82
	<i>Graduate</i>	2	0	2	2	0	2	4	0	4	2	0	2	1	0	1
White	<i>Undergrad</i>	1469	858	2327	1535	914	2449	1496	919	2415	1380	879	2259	1249	848	2097
	<i>Graduate</i>	120	89	209	132	81	213	111	84	195	100	70	170	143	74	217
Other	<i>Undergrad</i>	17	7	24												
	<i>Graduate</i>	3	6	9												
Unknown	<i>Undergrad</i>	83	76	159	72	62	134	60	46	106	36	28	64	33	30	63
	<i>Graduate</i>	7	4	11	10	9	19	7	6	13	5	6	11	13	10	23
Total		2071	1291	3362	2129	1301	3430	2150	1305	3455	2020	1278	3298	1947	1263	3210

Enrollment Headcount by Class Level: Fall 2009 - Fall 2013

Class Level	2009	2010	2011	2012	2013
Freshmen	695	672	715	683	625
Sophomores	715	654	657	644	632
Juniors	756	819	767	733	690
Seniors	805	887	958	895	872
Non Degree	57	54	42	61	46
Second Degree	35	33	34	22	18
60 Year Olds & Above	5	7	7	8	12
Teacher Certification	14	10	9	7	5
Visiting Students	10	9	1	0	0
Graduates	270	285	265	245	310
Total	3362	3430	3455	3298	3210

Enrollment Headcount by Department (First & Second Majors Combined): Fall 2009 - Fall 2013

Department	Academic Level	2009	2010	2011	2012	2013
Art		62	76	80	62	55
Biology		157	177	204	202	195
Business*	Total	757	706	671	619	669
	Undergraduate	624	578	551	509	538
	Masters & Other	133	128	120	110	131
Chemistry		42	48	46	48	47
Communication Arts and Sciences**		216	235	223	90	103
Communication Sciences and Disorders**	Total				130	146
	Undergraduate					130
	Masters					16
Computer Science and Information Systems	Total	106	138	124	117	134
	Undergraduate	87	121	109	101	120
	Masters & Other	19	17	15	16	14
Economics*					28	25
Education	Total	369	386	376	315	278
	Undergraduate	315	320	314	274	230
	Certificate	14	11	11	7	6
	Masters & Other	40	55	51	34	42
English	Total	157	133	140	117	109
	Undergraduate	134	118	121	107	105
	Masters	23	15	19	10	4
Geography and Geosciences	Total	37	33	21	22	31
	Undergraduate	25	17	12	7	7
	GIS Certificate	12	16	9	15	18
	APHG					6
History		92	100	96	88	63
Intercultural Studies		7	17	17	25	15
Kinesiology		170	184	231	215	216
Mathematics		71	76	72	73	63
Music		205	196	201	194	169

Department	Academic Level	2009	2010	2011	2012	2013
Nursing***	Total	330	312	325	329	334
	<i>Undergraduate</i>	308	285	302	294	271
	<i>Masters</i>	22	27	23	35	63
Philosophy		39	34	33	20	19
Physics		20	21	20	18	22
Political Science		53	65	68	70	46
Psychology	Total	250	253	268	284	313
	<i>Undergraduate</i>	217	209	229	245	277
	<i>Masters</i>	33	44	39	39	36
Religious Studies		26	22	28	14	11
Sociology		78	113	137	132	123
Urban Studies		6	13	10	8	10
World Languages, Literatures, and Cultures		63	74	80	64	59
Dual Pharmacy						7
Interdepartmental		1	3	2	1	1
IntCommStdy/MgrlComm/Org. Leadership & Comm.****		101	95	78	67	69
Liberal Studies		8	4	6	6	3
Open		128	129	131	134	84
Nondegree		59	53	39	52	40
ELSA		33	32	26	21	26
Total (Excluding ELSA)		3610	3696	3727	3544	3459

Note:

*Economics split from Business in 2011/2012

**Communications Sciences and Disorders split from Communications Arts and Sciences in 2011/2012

***The number of Nursing - Masters for Fall 2013 includes master's students in the new Public Health program

****Organizational Leadership and Communication is replacing Managerial Communication

Enrollment Headcount by First & Second Majors: Fall 2009 - Fall 2013

Academic Program	Department	2009		2010		2011		2012		2013	
		Major 1	Major 2	Major 1	Major 2	Major 1	Major 2	Major 1	Major 2	Major 1	Major 2
<u>Undergraduate</u>											
Accounting	Business	105	2	97	3	105	3	91	4	70	2
American Studies	American Studies	1		2	1		1				1
Applied Geospatial Technologies	Geography					3		2		1	
Art	Art	46	2	52	4	52	3	41		33	2
Art Business	Art	9		10		14		11		4	
Art Education	Art	5		11		11		7		3	
Biology	Biology	154	3	174	3	200	4	199	3	189	6
Business Administration (EMP)	Business	226	15	196	14	169	17	174	16	220	14
Chemistry	Chemistry	40	2	46	2	42	4	45	3	46	1
Comm. Sciences & Disorders (Pre-CSD)	Comm. Sciences & Disorders									63	
Communication Studies	Comm. Arts & Sciences	45	4	43	4	47	4	40	4	48	6
ComputerGame&EntertainmentTech	CSIS	35		39	4	37	4	31	1	33	
Computer Science	CSIS	25	4	40	5	37	5	41	3	48	4
Criminal Justice	Sociology	33	2	65	5	85	9	86	10	85	4
Dual Pharmacy										7	
Early Childhood Education	Education	31		29	1	22		17		15	
Economics	Economics	20	21	15	21	15	18	13	15	11	14
Education	Education	113		107		109		116	1	75	
Elementary Education	Education	129	1	132	2	140	3	102		97	
English	English	126	8	111	7	112	9	102	5	99	6
EnvironmentalGeoscience&Mngmnt	Geography	1									
Exercise Science	Kinesiology	85	3	109	3	163	2	168	1	168	4
Finance	Business	60	4	49	5	42	6	30	2	32	4
French	World Languages	3	3	5	5	2	6	2	6	2	4
Geography & Envirn Planning	Geography		1							1	
Geography & Geosciences	Geography	23		16	1	8	1	4	1	5	
German	World Languages	1	3	1	3	1	3	2	1	1	3
Graphic Design	Art							2	1	13	
History	History	79	12	88	9	87	9	74	14	48	15

Academic Program	Department	2009		2010		2011		2012		2013	
		Major 1	Major 2	Major 1	Major 2	Major 1	Major 2	Major 1	Major 2	Major 1	Major 2
Information Systems	CSIS	13	1	10		10		10	1	19	
Information Technology	CSIS	9		23		15	2	14		16	
Intercultural Studies	Intercultural Studies	1	6	7	10	8	9	15	10	10	5
Interdepartmental	Interdepartmental	1		1	2	1		1		1	
Interdisciplinary Communication Studies	InterdisCommStdY	54	6	51	5	39	4	42	5	38	6
International Business	Business	33	5	31	2	26	5	30	6	30	7
Jazz Studies	Music	18	1	18	2	14	4	17	3	14	5
Liberal Studies	Liberal Studies	8		4		6		6		3	
Logistics & Supply Chain Management	Business	11	1	17		17	1	18	1	19	2
Logistics & Transportation Management	Business									1	
Management	Business	45	2	57	1	53	2	53	1	53	6
Managerial Communication*	Accelerated Deg. Completion	40	1	38	1	34	1	14	1	9	
Marketing	Business	71	3	69	1	69	3	82	1	76	2
Mathematics	Mathematics	69	2	74	2	70	2	68	5	57	6
Multi-Language	World Languages	4		4	3	5	5	3	3	5	
Music	Music	26		22	2	22	2	25	2	16	1
Music Business	Music	62	4	54	3	67	1	54	4	55	3
Music Education	Music	85		89		83	1	79	4	65	
Music Performance	Music									1	
Music Theatre	Comm. Arts & Sciences	10		11		11	1	11	1	11	
Music/Theory & Composition	Music	3	3	4	2	6	1	6		7	2
Nursing (Pre-Nursing)	Nursing	308		284	1	301	1	294		271	
Open (Has Not Declared Major)	Open	128		129		131		134		84	
Organizational Communication	Comm. Arts & Sciences	13		8	2	20		21	1	18	5
Organizational Leadership & Comm.*	Accelerated Deg. Completion							5		16	
Philosophy	Philosophy	14	25	16	18	13	20	11	9	9	10
Physical Education	Kinesiology	82		72		65	1	45	1	44	
Physics	Physics	20		21		19	1	18		22	
Political Science	Political Science	45	8	50	15	57	11	62	8	41	5
Psychology	Psychology	181	36	171	38	195	34	206	39	236	41
Religion and Service	Religious Studies	3	1	13	1	6	4	2	4	3	2
Religious Studies	Religious Studies	6	3		3	8	2	5		4	
Secondary Education	Education		3		8		5		5		14

Academic Program	Department	2009		2010		2011		2012		2013	
		Major 1	Major 2	Major 1	Major 2	Major 1	Major 2	Major 1	Major 2	Major 1	Major 2
Sociology	Sociology	36	7	36	7	36	7	30	6	29	5
Spanish	World Languages	21	28	20	33	32	26	23	24	22	22
Special Education	Education	38		49		40		31	1	28	1
Speech-Language Pathology (Pre-SLP)	Comm. Sciences & Disorders	117	1	142		122	1	129	1	66	1
Theatre	Comm. Arts & Sciences	15	7	14	7	11	5	5	5	9	5
Theatre Arts Education	Comm. Arts & Sciences	4		4		1		2		1	
Theological Studies & Christian Ministry	Religious Studies	6	2	2	1	6	2	3		2	
Theology	Religious Studies	4	1	2							
Urban Studies	Urban Studies	5	1	11	2	9	1	5	3	8	2
<u>Graduate</u>											
Business Administration	Business	74		67		67		58		67	
Communication Sciences & Disorders	Comm. Sciences & Disorders									16	
Computer Information Systems	CSIS	18		17		15		16		12	1
Early Childhood Special Education	Education	24		24		26		25		28	
English Studies	English	23		15		19		10		4	
Industrial & Organizational Psychology	Psychology	33		44		38	1	39		35	1
Nursing	Nursing	22		27		21		35		46	
Professional Accountancy	Business	20		21		19		20		24	
Public Health	Nursing									17	
Supply Chain Management	Business	39		40		35		32		39	
Teacher Leadership	Education	11		12		14		9		6	
Total		3271	248	3332	274	3385	277	3223	246	3130	250

Note:

*Organizational Leadership & Communication is replacing Managerial Communication

Student Full Time Equivalent (FTE): Fall 2011 - Fall 2013

Student Type	2011			2012			2013		
	IBHE FTE	Internal FTE	FT+1/3PT FTE	IBHE FTE	Internal FTE	FT+1/3PT FTE	IBHE FTE	Internal FTE	FT+1/3PT FTE
Returning Traditional Program Full-Time Registered	2103	1986	1983	2040	1945	1943	1974	1880	1878
New Freshman Full-Time Registered	644	608	608	586	560	560	536	506	506
New Traditional Program Full-Time (Non Freshmen)	317	309	309	317	309	309	279	271	271
Total Traditional Program Full-Time	3064	2903	2900	2943	2814	2812	2789	2657	2655
Returning Traditional Program Part-Time Registered	50	44	39	36	31	27	33	29	27
New Traditional Program Part-Time Registered	10	9	11	8	7	10	4	4	8
Total Traditional Program Part-Time	60	53	50	44	38	37	37	33	35
Returning Accelerated Program Registered	63	55	63	58	50	54	65	56	63
New Accelerated Program Registered	28	25	33	23	20	24	36	31	39
Total Accelerated Program	91	80	96	81	70	78	101	87	102
Returning Graduate Registered	72	53	57	63	47	51	77	57	57
New Graduate Registered	63	45	42	65	48	43	105	77	77
Total Graduate	135	98	99	128	95	94	182	134	134
Total Registered FTE	3350	3134	3145	3196	3017	3021	3110	2912	2925

Note:

IBHE/IPEDS Method: Sum of undergrad credit hours/15 + sum of grad credit hours/12 - Used for state and federal reporting

Internal Method: Weights part-time student categories on historical patterns of credits taken - Used primarily for internal planning

Full-Time + 1/3 Part-Time Method (FT+1/3PT): Based on headcount only - Used in reports to some external groups such as U.S. News

Full-Time/Part-Time Faculty, Student-Faculty Ratio & Undergraduate Class Size: Fall 2009 - Fall 2013

Indicator		Statistical Formula	2009	2010	2011	2012	2013
A.	No. of Full-Time Undergraduates		2851	2904	2974	2864	2736
B.	No. of Part-Time Undergraduates		242	241	216	188	164
C.	Total Student Full Time Equivalent (FTE)	$C=A+(B/3)$	2932	2984	3046	2927	2791
D.	No. of Full-Time Faculty		134	136	141	151	159
E.	No. of Part-Time Faculty		228	235	233	241	198
F.	Total Faculty FTE	$F=D+(E/3)$	210	214	219	231	225
G.	Student to Faculty Ratio	$G=C/F$	14:1	14:1	14:1	13:1	12:1
No. of Undergrad Class Sections with							
H.	2-9 Students		158	160	169	182	110
I.	10-19 Students		306	301	304	341	323
J.	20-29 Students		242	264	266	224	211
K.	30-39 Students		33	22	17	14	24
L.	40-49 Students		0	1	1	1	4
M.	50-99 Students		0	0	0	1	1
N.	100+ Students		0	0	0	0	1
O.	Total Undergrad Class Sections	$O=H+I+J+K+L+M+N$	739	748	757	763	674
P.	% of Undergrad Class Sections with Fewer Than 20 Students	$P=(H+I)/O$	63%	62%	62%	69%	64%
Q.	Average Undergrad Class Size		17	16	16	16	17

Course Credit Hours (Full Academic Year) Earned by Department: 2008/2009 - 2012/2013

Department	2008/2009	2009/2010	2010/2011	2011/2012	2012/2013
Art	790	783	888	833	777
Biology	1110	998	1200	1196	1172
Business*	3770	3713	3706	3535	2809
Chemistry	640	601	728	768	769
Communication Arts and Sciences**	1774	2018	2095	2126	1418
Communication Sciences and Disorders**					713
Computer Science and Information Systems	556	538	685	749	741
Economics*					402
Education	2043	2146	2148	2059	1602
English	2189	2133	2065	2195	2029
Geography and Geosciences	507	446	454	333	330
History	745	708	694	677	617
Intercultural Studies***					152
Kinesiology	797	845	909	931	886
Mathematics	1302	1269	1313	1426	1365
Music	1420	1505	1370	1393	1257
Nursing	1001	1021	878	776	879
Philosophy	1005	974	979	934	849
Physics	308	286	315	294	344
Political Science	680	633	690	631	577
Psychology	1572	1489	1646	1716	1794
Religious Studies	1114	1138	1050	976	872
Sociology	533	583	754	831	854

Department	2008/2009	2009/2010	2010/2011	2011/2012	2012/2013
Urban Studies	37	65	76	125	124
World Languages, Literatures and Cultures	872	890	901	809	786
Total	24760	24777	25541	25313	24118

Note:

*Economics split from Business in 2011/2012

**Communications Sciences and Disorders split from Communications Arts and Sciences in 2011/2012

***Intercultural Studies was established as a department in 2012/13

New Student Yield from Application to Enrollment: Fall 2009 - Fall 2013

Indicator	2009	2010	2011	2012	2013
<u>Freshmen</u>					
No. of Applicants	2760	2547	2901	3056	2730
No. of Admits	1931	1867	2093	2082	1950
Admits as a % of Applicants	70.0%	73.3%	72.1%	68.1%	71.4%
No. Enrolled	584	538	608	560	506
No. Enrolled as a % of Admits	30.2%	28.8%	29.0%	26.9%	25.9%
<u>Transfers</u>					
No. of Applicants	890	994	1097	1081	984
No. of Admits	525	642	680	688	607
Admits as a % of Applicants	58.9%	64.5%	62.0%	63.6%	61.7%
No. Enrolled	267	319	309	309	271
No. Enrolled as a % of Admits	50.9%	49.7%	45.4%	44.9%	44.6%

Academic Profile of New Undergraduate Students (Freshmen & Transfers): Fall 2009 - Fall 2013

Indicator		2009	2010	2011	2012	2013
<u>Freshmen</u>						
From Top 25% of High School Class		51%	50%	52%	47%	47%
From Top 50% of High School Class		82%	83%	87%	82%	78%
High School GPA		3.37	3.39	3.41	3.40	3.32
Average ACT Composite		23.9	24.1	24.1	24.0	23.8
Percent with ACT of 21 or higher		80%	80%	81%	82%	79%
<u>ACT & SAT Score Percentiles</u>						
ACT Composite	25th Percentile	21	21	21	21	21
	75th Percentile	27	27	26	26	26
ACT English	25th Percentile	21	21	21	21	20
	75th Percentile	27	28	28	27	27
ACT Math	25th Percentile	20	20	21	21	21
	75th Percentile	27	26	26	27	26
SAT Critical Reading	25th Percentile	460	470	450	480	450
	75th Percentile	560	580	580	590	550
SAT Math	25th Percentile	480	520	490	515	450
	75th Percentile	610	610	590	610	580
SAT Writing	25th Percentile	480	480	440	475	430
	75th Percentile	560	600	550	595	540
<u>Transfers</u>						
College GPA		3.27	3.19	3.26	3.20	3.19

**Demographic Profile of New Full-Time Undergraduates in Traditional Programs
(Ethnicity, Gender, First-Generation Status, & In State/Out of State): Fall 2009 - Fall 2013**

Ethnicity	2009		2010		2011		2012		2013	
	Freshmen	Transfers	Freshmen	Transfers	Freshmen	Transfers	Freshmen	Transfers	Freshmen	Transfers
African American	31	6	17	12	31	17	40	12	33	8
American Indian/Alaskan Native	7	1	4	0	5	0	0	0	0	0
Asian American	20	9	20	7	24	16	29	14	22	13
Hawaiian-Pacific Islander			2	0	0	0	1	1	0	0
Hispanic	49	22	38	18	111	35	99	35	86	34
Nonresident Alien	8	4	3	13	0	1	0	13	0	7
Multiracial	9	5	8	4	30	3	20	3	25	8
White	435	204	437	260	401	225	368	227	331	193
Other	1	2								
Unknown	24	14	9	5	6	12	3	4	9	8
Total	584	267	538	319	608	309	560	309	506	271
No. of Students of Color	116	43	89	41	201	71	189	65	166	63
% of Students of Color	19.9%	16.1%	16.5%	12.9%	33.1%	23.0%	33.8%	21.0%	32.8%	23.2%
No. of Male Students	243	103	208	120	230	106	252	130	230	102
% of Male Students	41.6%	38.6%	38.7%	37.6%	37.8%	34.3%	45.0%	42.1%	45.5%	37.6%
No. of First-Generation Students	150	79	142	81	163	96	165	72	115	69
% of First-Generation Students	25.7%	29.6%	26.4%	25.4%	26.8%	31.1%	29.5%	23.3%	22.7%	25.5%
No. of Out-of-State Students	93	11	78	18	100	16	82	26	95	23
% of Out-of-State Students	15.9%	4.1%	14.5%	5.6%	16.4%	5.2%	14.6%	8.4%	18.8%	8.5%

Undergraduate Degrees Awarded by First Major: 2008/2009 - 2012/2013

CIP	Major Code	First Major	2008/09	2009/10	2010/11	2011/12	2012/13
52.0301	ACC	Accounting	26	26	29	36	29
5.0102	AS	American Studies	0	1	1	0	0
45.0701	AGT	Applied Geospatial Technologies	0	0	0	3	1
50.0701	ART	Art	10	7	11	20	10
50.0704	AB	Art Business	1	0	1	4	3
13.1302	AED	Art Education	2	2	1	2	1
26.0101	BIO	Biology	28	33	32	34	28
52.0201	BAD/EMP	Business Administration	70	50	54	58	37
40.0501	CHM	Chemistry	7	9	9	8	6
51.0201	CSD	Communication Sciences & Disorders					2
9.0101	CST	Communication Studies	7	15	15	17	21
10.0304	CGE	Computer Game & Entertainment Tech	1	3	5	9	8
11.0701	CS	Computer Science	5	3	5	7	6
43.0103	CJ	Criminal Justice	0	2	10	25	22
13.1210	ECE	Early Childhood Education	10	9	7	8	7
45.0601	ECO	Economics	3	5	7	5	5
13.0101	EDU	Education	1	3	2	5	3
13.1202	EED	Elementary Education	54	47	34	54	40
23.0101	ENG	English	33	31	29	33	30
45.0701	EGS	Environmental Geosciences	1	0	0	0	0
31.0505	EXS	Exercise Science	23	23	22	23	37
52.0801	FIN	Finance	14	21	21	20	19
16.0901	FRN	French	2	0	0	1	0
45.0701	GEO	Geography & Environmental Planning	3	0	0	0	0
45.0701	GGs	Geography & Geosciences	5	9	8	4	3
16.0501	GRM	German	0	0	0	0	1
50.0409	GDS	Graphic Design					2
54.0101	HIS	History	16	17	24	25	24
11.0401	ISY	Information Systems	2	4	3	4	5
11.0103	IT	Information Technology	4	5	4	4	6
30.2301	ICS	Intercultural Studies	0	0	3	3	4
30.9999	ID	Interdepartmental	0	1	1	1	1
9.0199	INT	Interdisciplinary Communication Studies	22	16	20	26	13

CIP	Major Code	First Major	2008/09	2009/10	2010/11	2011/12	2012/13
52.1101	IBU	International Business	10	9	9	7	6
50.0910	JZS	Jazz Studies	1	5	4	1	4
24.0101	BLS	Liberal Studies	2	4	2	1	3
52.0203	LSM	Logistics & Supply Chain Management	4	6	7	8	10
52.0299	MGT	Management	14	19	24	28	22
9.0901	MC	Managerial Communication	20	12	18	15	10
52.1401	MKT	Marketing	38	26	21	36	30
27.0101	MTH	Mathematics	4	14	16	21	10
16.9999	ML	Multi-Language	0	2	0	2	1
50.0901	MUS	Music	4	0	3	6	6
50.0909	MUB	Music Business	9	15	15	21	10
13.1312	MED	Music Education	16	22	20	13	16
50.0501	MUR	Music Theatre	1	1	1	1	3
50.0901	MIC	Music/Individual Concentration	2	0	0	0	0
50.0904	MTC	Music/Theory & Composition	2	1	2	2	2
51.1601	NRS/BSN	Nursing	81	69	100	61	67
9.0901	ORC	Organizational Communication	3	6	3	11	7
38.0101	PHL	Philosophy	2	7	7	5	8
13.1314	PED	Physical Education	13	18	22	23	14
40.0801	PHY	Physics	3	4	7	3	3
45.1001	POL	Political Science	12	11	11	13	22
42.0101	PSY/APP	Psychology	38	58	60	59	71
38.0201	RLS	Religion and Service	0	1	1	4	1
39.0604	RSS	Religious Studies	0	3	4	3	4
45.1101	SOC	Sociology	10	10	11	17	13
16.0905	SPN	Spanish	5	8	2	11	6
13.1001	SED	Special Education	6	8	17	13	12
51.0203	SPP	Speech-Language Pathology	28	26	35	33	29
50.0501	STH/THE	Theatre	6	4	6	5	5
50.0501	TAE	Theatre Arts Education	0	0	1	0	0
39.0601	TCM	Theological Studies & Christian Ministry	2	1	1	2	0
39.0604	THL	Theology	2	1	1	0	0
45.1201	URB	Urban Studies	3	2	5	5	3
All Programs in Total			691	715	794	869	772

Graduate Degrees Awarded by Major: 2008/2009 - 2012/2013

CIP	Major Code	Major	2008/09	2009/10	2010/11	2011/12	2012/13
52.0201	MBA	Business Administration	51	35	35	39	29
11.0901	CIS	Computer Information Systems	7	9	6	6	7
13.1210	MSE	Early Childhood Special Education	13	14	10	14	10
23.0101	MES	English Studies	9	10	5	7	8
42.0901	MIO	Industrial & Organizational Psychology	9	16	34	24	12
51.1601	MNR	Nursing	18	9	12	8	8
52.0301	MPA	Professional Accountancy	6	11	8	12	4
52.0203	MSM	Supply Chain Management	17	21	19	15	15
13.0101	MTL	Teacher Leadership	11	9	3	5	4
All Programs in Total			141	134	132	130	97

One-Year Fall-to-Fall Retention Rates by Student Type: 2008/2009 to 2012/2013

Student Type	Fall 2008 - 2009			Fall 2009 - 2010			Fall 2010 - 2011			Fall 2011 - 2012			Fall 2012 - 2013		
	Total No.	No. Retained or Graduated	% Retained or Graduated	Total No.	No. Retained or Graduated	% Retained or Graduated	Total No.	No. Retained or Graduated	% Retained or Graduated	Total No.	No. Retained or Graduated	% Retained or Graduated	Total No.	No. Retained or Graduated	% Retained or Graduated
<u>Traditional Full-Time</u>															
New Freshmen	586	488	83%	584	449	77%	538	429	80%	608	473	78%	560	438	78%
New Transfers (Total)	339	282	83%	267	233	87%	319	259	81%	309	250	81%	309	244	79%
<i>Freshman</i>	53	39	74%	28	25	89%	44	25	57%	39	27	69%	40	31	78%
<i>Sophomore</i>	159	136	86%	155	141	91%	142	123	87%	142	118	83%	122	98	80%
<i>Junior</i>	102	91	89%	63	56	89%	105	93	89%	106	90	85%	122	105	86%
<i>Senior</i>	9	8	89%	7	7	100%	10	10	100%	9	8	89%	7	7	100%
Continuing (Total)	1766	1651	93%	1909	1814	95%	1961	1850	94%	1983	1873	94%	1943	1810	93%
<i>Freshman</i>	77	57	74%	77	64	83%	77	60	78%	69	53	77%	84	58	69%
<i>Sophomore</i>	486	440	91%	525	484	92%	475	429	90%	474	432	91%	498	449	90%
<i>Junior</i>	532	511	96%	614	590	96%	656	629	96%	593	564	95%	573	540	94%
<i>Senior</i>	640	624	98%	674	664	99%	742	725	98%	827	811	98%	775	756	98%
<u>Traditional Part-Time</u>															
New	57	14	25%	45	10	22%	46	16	35%	32	4	13%	30	10	33%
Continuing	101	72	71%	109	77	71%	117	98	84%	117	90	77%	81	62	77%
<u>Accelerated</u>															
New	49	33	67%	40	21	53%	49	18	37%	36	21	58%	34	19	56%
Continuing	146	101	69%	138	106	77%	115	82	71%	105	82	78%	95	68	72%
<u>Graduate</u>															
New	110	99	90%	131	114	87%	146	123	84%	122	105	86%	123	105	85%
Continuing	161	154	96%	139	134	96%	139	131	94%	143	123	86%	123	108	88%

Six-Year Graduation Rates for Full-Time First-Time Bachelor's Degree-Seeking Students
Entering Cohorts: Fall 2003 - Fall 2007

Ethnicity		Fall 2003			Fall 2004			Fall 2005			Fall 2006			Fall 2007		
		Total No.	No. Graduated	% Graduated	Total No.	No. Graduated	% Graduated	Total No.	No. Graduated	% Graduated	Total No.	No. Graduated	% Graduated	Total No.	No. Graduated	% Graduated
African American	<i>Female</i>	17	8	47%	14	2	14%	14	4	29%	8	2	25%	7	6	86%
	<i>Male</i>	17	6	35%	8	4	50%	18	9	50%	10	6	60%	5	2	40%
	<i>Total</i>	34	14	41%	22	6	27%	32	13	41%	18	8	44%	12	8	67%
American Indian/ Alaskan Native	<i>Female</i>	0			1	1	100%	0			1	1	100%	0		
	<i>Male</i>	0			0			0			2	0	0%	0		
	<i>Total</i>	0			1	1	100%	0			3	1	33%	0		
Asian/Pacific Islander*	<i>Female</i>	9	7	78%	8	3	38%	8	4	50%	17	10	53%			
	<i>Male</i>	5	3	60%	2	1	50%	5	2	40%	5	4	80%			
	<i>Total</i>	14	10	71%	10	4	40%	13	6	46%	22	13	59%			
Asian*	<i>Female</i>													15	9	60%
	<i>Male</i>													14	9	64%
	<i>Total</i>													29	18	62%
Hawaiian-Pacific Islander*	<i>Female</i>													1	0	0%
	<i>Male</i>													0		
	<i>Total</i>													1	0	0%
Hispanic	<i>Female</i>	10	6	60%	18	11	61%	16	10	63%	23	14	61%	23	18	78%
	<i>Male</i>	7	4	57%	6	3	50%	11	9	82%	9	7	78%	15	8	53%
	<i>Total</i>	17	10	59%	24	14	58%	27	19	70%	32	21	66%	38	26	68%
Nonresident Alien	<i>Female</i>	2	2	100%	0			0			8	4	50%	3	3	100%
	<i>Male</i>	0			1	1	100%	1	1	100%	2	2	100%	1	1	100%
	<i>Total</i>	2	2	100%	1	1	100%	1	1	100%	10	6	60%	4	4	100%
Multiracial	<i>Female</i>							6	5	83%	2	1	50%	8	6	75%
	<i>Male</i>							4	3	75%	5	4	80%	9	5	56%
	<i>Total</i>							10	8	80%	7	5	71%	17	11	65%
White	<i>Female</i>	180	142	79%	168	144	86%	227	175	77%	233	181	78%	240	190	79%
	<i>Male</i>	99	67	68%	132	83	63%	137	93	68%	147	110	76%	154	109	71%
	<i>Total</i>	279	209	75%	300	227	76%	364	268	74%	378	291	77%	394	299	76%

Ethnicity		Fall 2003			Fall 2004			Fall 2005			Fall 2006			Fall 2007		
		Total No.	No. Graduated	% Graduated	Total No.	No. Graduated	% Graduated	Total No.	No. Graduated	% Graduated	Total No.	No. Graduated	% Graduated	Total No.	No. Graduated	% Graduated
Unknown	<i>Female</i>	12	7	58%	16	11	69%	11	5	45%	4	4	100%	7	6	86%
	<i>Male</i>	8	6	75%	12	6	50%	8	5	63%	8	6	75%	6	4	67%
	<i>Total</i>	20	13	65%	28	17	61%	19	10	53%	12	10	83%	13	10	77%
Overall	<i>Female</i>	230	172	75%	225	172	76%	282	203	72%	296	216	73%	304	238	78%
	<i>Male</i>	136	86	63%	161	98	61%	184	122	66%	186	139	75%	204	138	68%
	<i>Total</i>	366	258	70%	386	270	70%	466	325	70%	484	356	74%	508	376	74%

Note:

*Prior to Fall 2007, the categories of Asian and Hawaiian-Pacific Islander were combined under the category of Asian/Pacific Islander

Selected Degree-Seeking Undergraduate Activities & Characteristics: Fall 2009 - Fall 2013

Activity/Characteristic	2009		2010		2011		2012		2013	
	No.	%	No.	%	No.	%	No.	%	No.	%
All Degree-Seeking Undergraduate Students	3006	100%	3032	100%	3097	100%	2955	100%	2819	100%
Students Who Live in College-Owned, Operated or Affiliated Housing	1156	38.5%	1129	37.2%	1083	35.0%	1076	36.4%	1044	37.0%
Students Who Live off Campus or Commute	1850	61.5%	1903	62.8%	2014	65.0%	1879	63.6%	1775	63.0%
Student Athletes (unduplicated)	439	14.6%	420	13.9%	479	15.5%	452	15.3%	475	16.8%
Female Students	1875	62.4%	1891	62.4%	1934	62.4%	1821	61.6%	1695	60.1%
Male Students	1131	37.6%	1141	37.6%	1163	37.6%	1134	38.4%	1124	39.9%
Students Aged 25 or Older	366	12.2%	316	10.4%	320	10.3%	284	9.6%	260	9.2%
Students from Illinois	2729	90.8%	2750	90.7%	2802	90.5%	2672	90.4%	2539	90.1%
Students from Out of State in the U.S.	262	8.7%	268	8.8%	287	9.3%	275	9.3%	275	9.8%
No. of States Represented (Illinois included)	32		31		34		35		35	
International Students with Non-U.S. Citizenship	83	2.8%	88	2.9%	72	2.3%	81	2.7%	74	2.6%
No. of Countries Represented (U.S. included)	36		39		35		36		34	
First-Generation Students	762	25.3%	846	27.9%	822	26.5%	747	25.3%	702	24.9%

Cost of Attendance in Dollars: 2009/2010 - 2013/2014

	2009/10	2010/11	2011/12	2012/13	2013/14
<u>Full-Time Undergraduate Students</u>					
Tuition	27270	28600	29994	31450	32720
Fees	60	60	60	200	200
Tuition & Fees Total	27330	28660	30054	31650	32920
Books & Supplies	1000	1000	1500	1500	1500
Room, Board & Other Expenses (3 options)					
<i>1. On Campus</i>					
Room & Board	7874	8216	8524	8838	9112
Other Expenses	1796	1624	1922	2012	2468
Total	9670	9840	10446	10850	11580
<i>2. Off Campus (not with family)</i>					
Room & Board	5000	5000	5500	5500	6000
Other Expenses	4670	3840	4446	4350	4580
Total	9670	8840	9946	9850	10580
<i>3. Off Campus (with family)</i>					
Other Expenses	4670	3840	4446	4350	4580
<u>Part-Time Undergraduate Students</u>					
Per Credit Hour Charge	776	814	854	896	931
<u>Graduate Students</u>					
Average Per Credit Hour Charge (Actual charge varies by program)	700	700	700	750	750

Employees by Tenure Status, Occupational Category, & Full-Time/Part-Time Status: 2012-2013

Occupational Category	Tenured		On Tenure Track		Not on Tenure Track		Without Faculty Status		Category Total		
	Full Time	Part Time	Full Time	Part Time	Full Time	Part Time	Full Time	Part Time	Full Time	Part Time	Total
Postsecondary Teachers	84	3	35		28	226	6		153	229	382
Archivists, Curators, & Museum Technicians	1						1		2	0	2
Librarians	5							6	5	6	11
Library Technicians							1		1	0	1
Other Teachers & Instructional Support Staff									0	0	0
Management Occupations	7						25	1	32	1	33
Business & Financial Operations Occupations							8		8	0	8
Computer, Engineering, & Science Occupations							15	2	15	2	17
Community Service, Legal, Arts, & Media Occupations							32		32	0	32
Healthcare Practitioners & Technical Occupations							5	5	5	5	10
Service Occupations									50	16	66
Sales & Related Occupations									0	0	0
Office & Administrative Support Occupations									132	30	162
Natural Resources, Construction, & Maintenance Occupations									14	0	14
Production, Transportation, & Material Moving Occupations									1	12	13
Total									450	301	751

Note:

IPEDS occupational categories changed for 2012/13. For EC employee data for 2007/08 to 2011/12 with older occupational categories, refer to next page.

Employees by Occupational Category & Full-Time/Part-Time Status: 2007/2008 to 2011/2012

Occupational Category	2007/08			2008/09			2009/10			2010/11			2011/12		
	Full Time	Part Time	Total	Full Time	Part Time	Total	Full Time	Part Time	Total	Full Time	Part Time	Total	Full Time	Part Time	Total
Primary Instruction	125	216	341	131	220	351	134	228	362	135	237	372	140	258	398
Instruction/Research/Public Service	4	0	4	10	4	14	10	0	10	10	0	10	7	0	7
Primary Instruction + Instruction/Research/Public Service	129	216	345	141	224	365	144	228	372	145	237	382	147	258	405
Executive/Administrative/Managerial	28	0	28	28	0	28	35	1	36	37	0	37	36	0	36
Other Professionals (Support/Service)	104	11	115	107	9	116	103	11	114	107	13	120	109	12	121
Technical and Paraprofessionals	7	5	12	7	7	14	7	7	14	8	7	15	8	7	15
Clerical and Secretarial	75	34	109	76	34	110	76	33	109	77	33	110	78	30	108
Skilled Crafts	15	0	15	17	0	17	17	0	17	15	0	15	16	0	16
Service/Maintenance	42	26	68	48	24	72	50	27	77	48	24	72	49	24	73
Total	400	292	692	424	298	722	432	307	739	437	314	751	443	331	774

Undergraduate Alumni by State of Residence
(as of November 2013)

State	No. of Alumni	% of Alumni	State	No. of Alumni	% of Alumni	State	No. of Alumni
Illinois	18732	61.0%	Washington	106	0.3%	Oklahoma	20
Unavailable	6318	20.6%	New York	101	0.3%	Mississippi	19
Florida	537	1.7%	Maryland	83	0.3%	Utah	17
Wisconsin	534	1.7%	New Jersey	81	0.3%	Hawaii	15
California	486	1.6%	Oregon	69	0.2%	South Dakota	13
Texas	322	1.0%	Kentucky	68	0.2%	West Virginia	12
Michigan	315	1.0%	South Carolina	67	0.2%	District of Columbia	11
Arizona	301	1.0%	Nevada	66	0.2%	Idaho	11
Indiana	295	1.0%	Massachusetts	53	0.2%	Maine	11
Missouri	278	0.9%	Kansas	48	0.2%	Rhode Island	10
Ohio	235	0.8%	Arkansas	47	0.2%	Delaware	8
Colorado	198	0.6%	Connecticut	40	0.1%	Vermont	8
Minnesota	166	0.5%	Nebraska	36	0.1%	Wyoming	8
Georgia	152	0.5%	Foreign Countries	32	0.1%	North Dakota	3
North Carolina	143	0.5%	New Mexico	30	0.1%	Alaska	2
Tennessee	125	0.4%	Alabama	29	0.1%		
Iowa	124	0.4%	New Hampshire	25	0.1%	Total	30694
Pennsylvania	124	0.4%	Louisiana	21	0.1%		
Virginia	119	0.4%	Montana	20	0.1%		