



# Data Book

*2014-2015*

## Table of Contents

Foreword.....	2
Elmhurst College Fast Facts.....	3
Enrollment by Academic Level & Full-Time/Part-Time Status.....	4
Fall & Summer Enrollment Chart.....	5
Enrollment by Ethnicity & Gender.....	6
Enrollment by Class Level.....	7
Enrollment by Department.....	8
Enrollment by First & Second Majors.....	10
Student Full-Time Equivalent (FTE).....	13
Full-Time/Part-Time Faculty, Student-Faculty Ratio & Class Size.....	14
Credit Hours Earned by Department.....	15
Admissions.....	17
Academic Profile of New Freshmen & Transfers.....	18
Demographic Profile of New Freshmen & Transfers.....	19
Undergraduate Degrees Awarded.....	20
Graduate Degrees Awarded.....	22
One-Year Fall to Fall Retention Rates.....	23
Six-Year Graduation Rates.....	24
Undergraduate Activities & Characteristics.....	26
Cost of Attendance.....	27
Employees 2013/2014.....	28
Employees 2012/2013.....	29
Alumni Information.....	30

## Foreword

Welcome to the Elmhurst College 2014-2015 Data Book!

This data booklet is a compilation of statistical information frequently requested by the Elmhurst College community. It primarily includes information about student enrollment, student full-time equivalent (FTE), faculty, admissions, degrees awarded, retention rates, graduation rates, cost of attendance, employees, and alumni. In most cases, five-year trend data, including the most recent Fall 2014 data, are provided.

The Data Book is prepared by the Office of Information Services. If you have any questions about the Data Book, or if you need any institutional data not found here, please feel free to contact Yanli Ma ([yanlima@elmhurst.edu](mailto:yanlima@elmhurst.edu)) or Jim Kulich ([jimk@elmhurst.edu](mailto:jimk@elmhurst.edu)). Additionally, you can view consumer information about Elmhurst College as required by the Higher Education Act at <http://public.elmhurst.edu/about/201677131.html>.

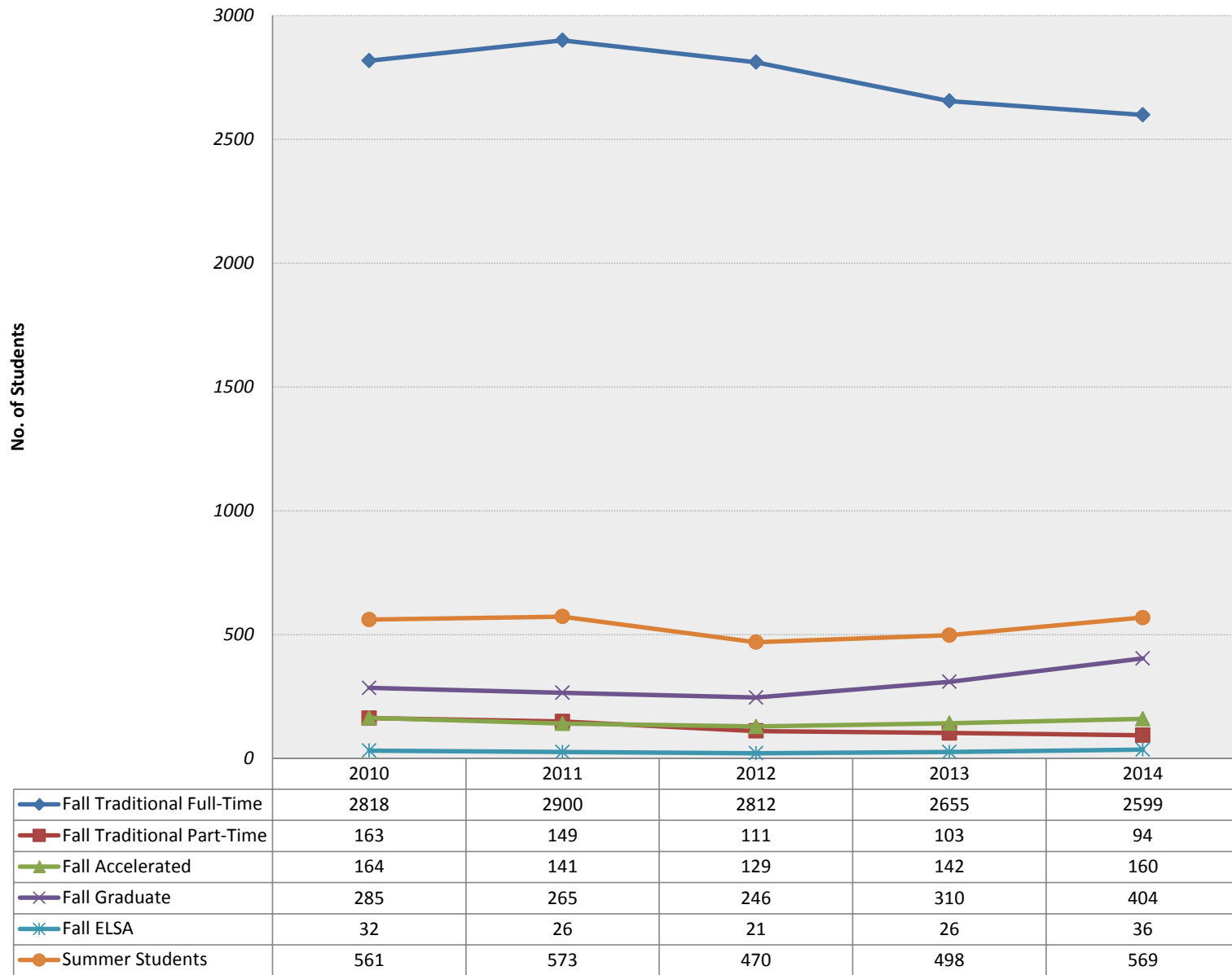
### Elmhurst College Fast Facts: 2010 - 2014

Key Indicator	2010	2011	2012	2013	2014
<b>Students in Traditional Full-Time Programs, Fall Term</b>					
New Freshmen	538	608	560	506	510
New Transfers	319	309	309	271	290
Continuing/Returning	1961	1983	1943	1878	1799
<b>Total Traditional Full-Time Programs</b>	<b>2818</b>	<b>2900</b>	<b>2812</b>	<b>2655</b>	<b>2599</b>
<b>Students in Part-Time and Special Programs, Fall Term</b>					
Traditional Part-Time Programs	163	149	111	103	94
Accelerated Undergraduate Programs	164	141	129	142	160
Graduate Programs	285	265	246	310	404
<b>Total Part-Time and Special Programs</b>	<b>612</b>	<b>555</b>	<b>486</b>	<b>555</b>	<b>658</b>
<b>Total Student Headcount Enrollment, Fall Term</b>	<b>3430</b>	<b>3455</b>	<b>3298</b>	<b>3210</b>	<b>3257</b>
<b>Total Student Full-Time Equivalent (FTE), Fall Term</b>					
IBHE/IPEDS Method	3313	3350	3196	3110	3125
Internal Method	3082	3134	3017	2912	2911
Full-Time + 1/3 Part-Time Method	3094	3145	3021	2925	2942
<b>Summer Term Enrollment</b>	561	573	470	498	569
<b>Retention Rate (Freshman to Sophomore Year)</b>	77%	80%	78%	78%	82%
<b>Graduation Rate (Six Years)</b>	69%	70%	74%	74%	74%
<b>Resident Students</b>	1134	1090	1086	1059	1028
<b>Student Athletes (unduplicated headcount)</b>	420	479	452	475	490
<b>Profile of New Undergraduate Students</b>					
<b>New Freshmen</b> High School G.P.A.	3.39	3.41	3.40	3.32	3.38
Average ACT Composite	24.1	24.1	24.0	23.8	23.6
Percent of Students of Color	17%	33%	34%	33%	37%
Percent of First-Generation Students	26%	27%	30%	23%	25%
<b>New Transfers</b> College G.P.A.	3.19	3.26	3.20	3.19	3.16
<b>Full-Time Teaching Faculty</b>	136	141	151	159	160
<b>Endowment (June 30 Market Value)</b>	\$76,976,852	\$91,967,891	\$85,212,045	\$91,580,106	\$96,956,552

## Enrollment Headcount by Academic Level & Full-Time/Part-Time Status: Fall 2010 - Fall 2014

	2010	2011	2012	2013	2014
<b><u>Traditional Full-Time Undergraduate Programs</u></b>					
New Freshmen	538	608	560	506	510
New Transfers & Other	319	309	309	271	290
Continuing/Returning Students	1961	1983	1943	1878	1799
<b>Total Traditional Full-Time Students</b>	<b>2818</b>	<b>2900</b>	<b>2812</b>	<b>2655</b>	<b>2599</b>
<b><u>Traditional Part-Time, Accelerated, &amp; Graduate Programs</u></b>					
Traditional Part-Time Undergraduate Students	163	149	111	103	94
Students in Accelerated Programs	164	141	129	142	160
Graduate Students	285	265	246	310	404
<b>Total Traditional Part-Time, Accelerated &amp; Graduate Students</b>	<b>612</b>	<b>555</b>	<b>486</b>	<b>555</b>	<b>658</b>
 <b>Total Headcount</b>	 <b>3430</b>	 <b>3455</b>	 <b>3298</b>	 <b>3210</b>	 <b>3257</b>
 Of total headcount, Degree-Seeking Undergraduate Students					
Full-Time	2872	2939	2833	2719	2668
Part-Time	160	158	122	100	105
Total	3032	3097	2955	2819	2773

## Fall & Summer Enrollment: Calendar Year 2010-2014



## Enrollment Headcount by Ethnicity, Gender & Academic Level: Fall 2010 - Fall 2014

Ethnicity	Academic Level	2010			2011			2012			2013			2014		
		Female	Male	Total	Female	Male	Total	Female	Male	Total	Female	Male	Total	Female	Male	Total
African American	<i>Undergrad</i>	56	47	103	70	55	125	74	73	147	72	62	134	66	60	126
	<i>Graduate</i>	11	6	17	13	7	20	17	7	24	21	8	29	14	14	28
American Indian/Alaskan Native	<i>Undergrad</i>	7	8	15	11	6	17	7	4	11	6	3	9	3	1	4
	<i>Graduate</i>	0	0	0	0	0	0	0	0	0	0	0	0	0	0	0
Asian	<i>Undergrad</i>	74	43	117	94	39	133	93	34	127	88	45	133	96	42	138
	<i>Graduate</i>	14	5	19	17	1	18	15	5	20	12	6	18	13	4	17
Hawaiian-Pacific Islander	<i>Undergrad</i>	4	1	5	6	3	9	8	4	12	4	0	4	2	1	3
	<i>Graduate</i>	0	0	0	0	0	0	0	0	0	2	0	2	2	1	3
Hispanic	<i>Undergrad</i>	149	84	233	201	106	307	213	125	338	230	134	364	263	170	433
	<i>Graduate</i>	7	7	14	6	5	11	7	7	14	11	2	13	19	6	25
Nonresident Alien	<i>Undergrad</i>	29	12	41	15	6	21	17	11	28	10	4	14	7	4	11
	<i>Graduate</i>	0	1	1	1	3	4	2	3	5	4	3	7	4	6	10
Multiracial	<i>Undergrad</i>	27	21	48	38	19	57	44	22	66	48	34	82	55	36	91
	<i>Graduate</i>	2	0	2	4	0	4	2	0	2	1	0	1	3	0	3
White	<i>Undergrad</i>	1535	914	2449	1496	919	2415	1380	879	2259	1249	848	2097	1191	799	1990
	<i>Graduate</i>	132	81	213	111	84	195	100	70	170	143	74	217	204	94	298
Unknown	<i>Undergrad</i>	72	62	134	60	46	106	36	28	64	33	30	63	26	31	57
	<i>Graduate</i>	10	9	19	7	6	13	5	6	11	13	10	23	12	8	20
<b>Total</b>		<b>2129</b>	<b>1301</b>	<b>3430</b>	<b>2150</b>	<b>1305</b>	<b>3455</b>	<b>2020</b>	<b>1278</b>	<b>3298</b>	<b>1947</b>	<b>1263</b>	<b>3210</b>	<b>1980</b>	<b>1277</b>	<b>3257</b>

### Enrollment Headcount by Class Level: Fall 2010 - Fall 2014

Class Level	2010	2011	2012	2013	2014
Freshmen	672	715	683	625	653
Sophomores	654	657	644	632	582
Juniors	819	767	733	690	715
Seniors	887	958	895	872	823
Non Degree	54	42	61	46	41
Second Degree	33	34	22	18	25
60 Year Olds & Above	7	7	8	12	9
Teacher Certification	10	9	7	5	5
Visiting Students	9	1	0	0	0
Graduates	285	265	245	310	404
<b>Total</b>	<b>3430</b>	<b>3455</b>	<b>3298</b>	<b>3210</b>	<b>3257</b>



### Enrollment Headcount by Department (First & Second Majors Combined): Fall 2010 - Fall 2014

Department	Academic Level	2010	2011	2012	2013	2014
Art		76	80	62	55	54
Biology		177	204	202	195	185
Business*	Total	706	671	619	669	692
	<i>Undergraduate</i>	578	551	509	538	565
	<i>Masters &amp; Other</i>	128	120	110	131	127
Chemistry		48	46	48	47	45
Communication Arts and Sciences**		235	223	90	103	100
Communication Sciences and Disorders**	Total			130	146	162
	<i>Undergraduate</i>				130	129
	<i>Masters</i>				16	33
Computer Science and Information Systems	Total	138	124	117	134	166
	<i>Undergraduate</i>	121	109	101	120	123
	<i>Masters &amp; Other</i>	17	15	16	14	43
Economics*				28	25	22
Education	Total	386	376	315	278	259
	<i>Undergraduate</i>	320	314	274	230	190
	<i>Certificate</i>	11	11	7	6	5
	<i>Masters &amp; Other</i>	55	51	34	42	64
English	Total	133	140	117	109	91
	<i>Undergraduate</i>	118	121	107	105	91
	<i>Masters</i>	15	19	10	4	0
Geography and Geosciences	Total	33	21	22	31	43
	<i>Undergraduate</i>	17	12	7	7	15
	<i>GIS Certificate</i>	16	9	15	18	14
	<i>Masters &amp; Other</i>				6	14
History		100	96	88	63	64
Intercultural Studies		17	17	25	15	28
Kinesiology		184	231	215	216	226
Mathematics		76	72	73	63	57
Music		196	201	194	169	193

Department	Academic Level	2010	2011	2012	2013	2014
Nursing***	Total	312	325	329	334	363
	<i>Undergraduate</i>	285	302	294	271	273
	<i>Masters</i>	27	23	35	63	90
Philosophy		34	33	20	19	13
Physics		21	20	18	22	24
Political Science		65	68	70	46	42
Psychology	Total	253	268	284	313	280
	<i>Undergraduate</i>	209	229	245	277	247
	<i>Masters</i>	44	39	39	36	33
Religious Studies		22	28	14	11	10
Sociology		113	137	132	123	133
Urban Studies		13	10	8	10	16
World Languages, Literatures, and Cultures		74	80	64	59	50
Dual Pharmacy					7	4
Interdepartmental		3	2	1	1	0
IntCommStdY/MgrlComm/Org. Leadership & Comm.****		95	78	67	69	54
Liberal Studies		4	6	6	3	2
Open		129	131	134	84	86
Nondegree		53	39	52	40	35
ELSA		32	26	21	26	36
<b>Total (Excluding ELSA)</b>		<b>3696</b>	<b>3727</b>	<b>3544</b>	<b>3459</b>	<b>3499</b>

**Note:**

\*Economics split from Business in 2011/2012

\*\*Communications Sciences and Disorders split from Communications Arts and Sciences in 2011/2012

\*\*\*The number of Nursing - Masters for Fall 2013 and 2014 includes master's students in the Public Health program

\*\*\*\*Organizational Leadership and Communication is replacing Managerial Communication

### Enrollment Headcount by First & Second Majors: Fall 2010 - Fall 2014

Academic Program	Department	2010		2011		2012		2013		2014	
		Major 1	Major 2	Major 1	Major 2	Major 1	Major 2	Major 1	Major 2	Major 1	Major 2
<u>Undergraduate</u>											
Accounting	Business	97	3	105	3	91	4	70	2	78	1
American Studies	American Studies	2	1		1				1		1
Applied Geospatial Technologies	Geography			3		2		1		5	1
Art	Art	52	4	52	3	41		33	2	23	3
Art Business	Art	10		14		11		4		6	
Art Education	Art	11		11		7		3		2	
Biology	Biology	174	3	200	4	199	3	189	6	184	1
Business Administration (EMP)	Business	196	14	169	17	174	16	220	14	232	16
Chemistry	Chemistry	46	2	42	4	45	3	46	1	45	
Comm. Sciences & Disorders (Pre-CSD)	Comm. Sciences & Disorders							63		107	1
Communication Studies	Comm. Arts & Sciences	43	4	47	4	40	4	48	6	48	6
ComputerGame&EntertainmentTech	CSIS	39	4	37	4	31	1	33		41	
Computer Science	CSIS	40	5	37	5	41	3	48	4	38	5
Criminal Justice	Sociology	65	5	85	9	86	10	85	4	78	9
Cyber Security	CSIS									3	
Dual Pharmacy								7		4	
Early Childhood Education	Education	29	1	22		17		15		18	
Economics	Economics	15	21	15	18	13	15	11	14	14	8
Education	Education	107		109		116	1	75		60	
Elementary Education	Education	132	2	140	3	102		97		77	
English	English	111	7	112	9	102	5	99	6	85	6
Exercise Science	Kinesiology	109	3	163	2	168	1	168	4	168	2
Finance	Business	49	5	42	6	30	2	32	4	38	8
French	World Languages	5	5	2	6	2	6	2	4	1	3
Geography & Envirn Planning	Geography							1			
Geography & Geosciences	Geography	16	1	8	1	4	1	5		7	2
German	World Languages	1	3	1	3	2	1	1	3		2
Graphic Design	Art					2	1	13		18	2
History	History	88	9	87	9	74	14	48	15	52	12

Academic Program	Department	2010		2011		2012		2013		2014	
		Major 1	Major 2	Major 1	Major 2	Major 1	Major 2	Major 1	Major 2	Major 1	Major 2
Information Systems	CSIS	10		10		10	1	19		18	
Information Technology	CSIS	23		15	2	14		16		18	
Intercultural Studies	Intercultural Studies	7	10	8	9	15	10	10	5	13	15
Interdepartmental	Interdepartmental	1	2	1		1		1			
Interdisciplinary Communication Studies	InterdisCommStdY	51	5	39	4	42	5	38	6	35	1
International Business	Business	31	2	26	5	30	6	30	7	29	3
Jazz Studies	Music	18	2	14	4	17	3	14	5	15	6
Liberal Studies	Liberal Studies	4		6		6		3		2	
Logistics & Supply Chain Management	Business	17		17	1	18	1	19	2	24	1
Logistics & Transportation Management	Business							1			
Management	Business	57	1	53	2	53	1	53	6	53	7
Managerial Communication*	Accelerated Deg. Completion	38	1	34	1	14	1	9		4	
Marketing	Business	69	1	69	3	82	1	76	2	72	3
Mathematics	Mathematics	74	2	70	2	68	5	57	6	53	4
Multi-Language	World Languages	4	3	5	5	3	3	5		4	
Music	Music	22	2	22	2	25	2	16	1	24	3
Music Business	Music	54	3	67	1	54	4	55	3	57	6
Music Education	Music	89		83	1	79	4	65		66	1
Music Performance	Music							1		2	1
Music Theatre	Comm. Arts & Sciences	11		11	1	11	1	11		10	1
Music/Theory & Composition	Music	4	2	6	1	6		7	2	9	3
Nursing (Pre-Nursing)	Nursing	284	1	301	1	294		271		273	
Open (Has Not Declared Major)	Open	129		131		134		84		86	
Organizational Communication	Comm. Arts & Sciences	8	2	20		21	1	18	5	14	3
Organizational Leadership & Comm.*	Accelerated Deg. Completion					5		16		14	
Philosophy	Philosophy	16	18	13	20	11	9	9	10	7	6
Physical Education	Kinesiology	72		65	1	45	1	44		40	
Physics	Physics	21		19	1	18		22		23	1
Political Science	Political Science	50	15	57	11	62	8	41	5	37	5
Psychology	Psychology	171	38	195	34	206	39	236	41	218	29
Religion and Service	Religious Studies	13	1	6	4	2	4	3	2	2	1
Religious Studies	Religious Studies		3	8	2	5		4		4	
Secondary Education	Education		8		5		5		14		9

Academic Program	Department	2010		2011		2012		2013		2014	
		Major 1	Major 2	Major 1	Major 2	Major 1	Major 2	Major 1	Major 2	Major 1	Major 2
Sociology	Sociology	36	7	36	7	30	6	29	5	36	10
Spanish	World Languages	20	33	32	26	23	24	22	22	19	21
Special Education	Education	49		40		31	1	28	1	25	1
Speech-Language Pathology (Pre-SLP)	Comm. Sciences & Disorders	142		122	1	129	1	66	1	21	
Sport Management	Kinesiology									15	1
Theatre	Comm. Arts & Sciences	14	7	11	5	5	5	9	5	13	5
Theatre Arts Education	Comm. Arts & Sciences	4		1		2		1			
Theological Studies & Christian Ministry	Religious Studies	2	1	6	2	3		2		3	
Theology	Religious Studies	2									
Urban Studies	Urban Studies	11	2	9	1	5	3	8	2	8	8
<b><u>Graduate</u></b>											
Applied Geospatial Sciences	Geography									9	
Business Administration	Business	67		67		58		67		77	
Communication Sciences & Disorders	Comm. Sciences & Disorders							16		33	
Computer Information Systems	CSIS	17		15		16		12	1	16	1
Data Science	CSIS									22	
Early Childhood Special Education	Education	24		26		25		28		26	
English Studies	English	15		19		10		4			
Industrial & Organizational Psychology	Psychology	44		38	1	39		35	1	33	
Nursing	Nursing	27		21		35		46		50	
Nursing Master's Entry	Nursing									15	
Professional Accountancy	Business	21		19		20		24		19	
Public Health	Nursing							17		25	
Supply Chain Management	Business	40		35		32		39		31	
Teacher Leadership	Education	12		14		9		6		15	
<b>Total</b>		<b>3332</b>	<b>274</b>	<b>3385</b>	<b>277</b>	<b>3223</b>	<b>246</b>	<b>3130</b>	<b>250</b>	<b>3169</b>	<b>245</b>

**Note:**

\*Organizational Leadership & Communication is replacing Managerial Communication

### Student Full Time Equivalent (FTE): Fall 2012 - Fall 2014

Student Type	2012			2013			2014		
	IBHE FTE	Internal FTE	FT+1/3PT FTE	IBHE FTE	Internal FTE	FT+1/3PT FTE	IBHE FTE	Internal FTE	FT+1/3PT FTE
Returning Traditional Program Full-Time Registered	2040	1945	1943	1974	1880	1878	1891	1802	1799
New Freshman Full-Time Registered	586	560	560	536	506	506	543	510	510
New Traditional Program Full-Time (Non Freshmen)	317	309	309	279	271	271	298	290	290
<b>Total Traditional Program Full-Time</b>	<b>2943</b>	<b>2814</b>	<b>2812</b>	<b>2789</b>	<b>2657</b>	<b>2655</b>	<b>2732</b>	<b>2602</b>	<b>2599</b>
Returning Traditional Program Part-Time Registered	36	31	27	33	29	27	27	24	23
New Traditional Program Part-Time Registered	8	7	10	4	4	8	7	6	8
<b>Total Traditional Program Part-Time</b>	<b>44</b>	<b>38</b>	<b>37</b>	<b>37</b>	<b>33</b>	<b>35</b>	<b>34</b>	<b>30</b>	<b>31</b>
Returning Accelerated Program Registered	58	50	54	65	56	63	67	59	70
New Accelerated Program Registered	23	20	24	36	31	39	46	40	50
<b>Total Accelerated Program</b>	<b>81</b>	<b>70</b>	<b>78</b>	<b>101</b>	<b>87</b>	<b>102</b>	<b>113</b>	<b>99</b>	<b>120</b>
Returning Graduate Registered	63	47	51	77	57	57	107	79	86
New Graduate Registered	65	48	43	105	77	77	140	103	105
<b>Total Graduate</b>	<b>128</b>	<b>95</b>	<b>94</b>	<b>182</b>	<b>134</b>	<b>134</b>	<b>247</b>	<b>182</b>	<b>191</b>
<b>Total Registered FTE</b>	<b>3196</b>	<b>3017</b>	<b>3021</b>	<b>3110</b>	<b>2912</b>	<b>2925</b>	<b>3125</b>	<b>2911</b>	<b>2942</b>

**Note:**

IBHE/IPEDS Method: Sum of undergrad credit hours/15 + sum of grad credit hours/12 - Used for state and federal reporting

Internal Method: Weights part-time student categories on historical patterns of credits taken - Used primarily for internal planning

Full-Time + 1/3 Part-Time Method (FT+1/3PT): Based on headcount only - Used in reports to some external groups such as U.S. News

### Full-Time/Part-Time Faculty, Student-Faculty Ratio & Undergraduate Class Size: Fall 2010 - Fall 2014

Indicator		Statistical Formula	2010	2011	2012	2013	2014
A.	No. of Full-Time Undergraduates		2904	2974	2864	2736	2699
B.	No. of Part-Time Undergraduates		241	216	188	164	154
C.	<b>Total Student Full Time Equivalent (FTE)</b>	$C=A+(B/3)$	2984	3046	2927	2791	2750
D.	No. of Full-Time Faculty		136	141	151	159	160
E.	No. of Part-Time Faculty		235	233	241	198	200
F.	<b>Total Faculty FTE</b>	$F=D+(E/3)$	214	219	231	225	227
G.	<b>Student to Faculty Ratio</b>	$G=C/F$	14:1	14:1	13:1	12:1	12:1
No. of Undergrad Class Sections with							
H.	2-9 Students		160	169	182	110	99
I.	10-19 Students		301	304	341	323	327
J.	20-29 Students		264	266	224	211	208
K.	30-39 Students		22	17	14	24	29
L.	40-49 Students		1	1	1	4	3
M.	50-99 Students		0	0	1	1	2
N.	100+ Students		0	0	0	1	0
O.	Total Undergrad Class Sections	$O=H+I+J+K+L+M+N$	748	757	763	674	668
P.	<b>% of Undergrad Class Sections with Fewer Than 20 Students</b>	$P=(H+I)/O$	62%	62%	69%	64%	64%
Q.	<b>Average Undergrad Class Size</b>		16	16	16	17	17

**Course Credit Hours (Full Academic Year) Earned by Department: 2009/2010 - 2013/2014**

Department	2009/2010	2010/2011	2011/2012	2012/2013	2013/2014
Art	783	888	833	777	697
Biology	998	1200	1196	1172	1214
Business*	3713	3706	3535	2809	2898
Chemistry	601	728	768	769	812
Communication Arts and Sciences**	2018	2095	2126	1418	1522
Communication Sciences and Disorders**				713	745
Computer Science and Information Systems	538	685	749	741	642
Economics*				402	428
Education	2146	2148	2059	1602	1495
English	2133	2065	2195	2029	1938
Geography and Geosciences	446	454	333	330	364
History	708	694	677	617	516
Intercultural Studies***				152	165
Kinesiology	845	909	931	886	938
Mathematics	1269	1313	1426	1365	1272
Music	1505	1370	1393	1257	1252
Nursing	1021	878	776	879	1063
Philosophy	974	979	934	849	768
Physics	286	315	294	344	356
Political Science	633	690	631	577	442
Psychology	1489	1646	1716	1794	1701
Religious Studies	1138	1050	976	872	847
Sociology	583	754	831	854	793



Department	2009/2010	2010/2011	2011/2012	2012/2013	2013/2014
Urban Studies	65	76	125	124	105
World Languages, Literatures and Cultures	890	901	809	786	682
<b>Total</b>	<b>24777</b>	<b>25541</b>	<b>25313</b>	<b>24118</b>	<b>23655</b>

Note:

\*Economics split from Business in 2011/2012

\*\*Communications Sciences and Disorders split from Communications Arts and Sciences in 2011/2012

\*\*\*Intercultural Studies was established as a department in 2012/13

### New Student Yield from Application to Enrollment: Fall 2010 - Fall 2014

Indicator	2010	2011	2012	2013	2014
<b><u>Freshmen</u></b>					
No. of Applicants	2547	2901	3056	2730	3193
No. of Admits	1867	2093	2082	1950	2162
Admits as a % of Applicants	73.3%	72.1%	68.1%	71.4%	67.7%
No. Enrolled	538	608	560	506	510
No. Enrolled as a % of Admits	28.8%	29.0%	26.9%	25.9%	23.6%
<b><u>Transfers</u></b>					
No. of Applicants	994	1097	1081	984	1024
No. of Admits	642	680	688	607	641
Admits as a % of Applicants	64.5%	62.0%	63.6%	61.7%	62.6%
No. Enrolled	319	309	309	271	290
No. Enrolled as a % of Admits	49.7%	45.4%	44.9%	44.6%	45.2%

## Academic Profile of New Undergraduate Students (Freshmen & Transfers): Fall 2010 - Fall 2014

Indicator		2010	2011	2012	2013	2014
<b><u>Freshmen</u></b>						
From Top 25% of High School Class		50%	52%	47%	47%	45%
From Top 50% of High School Class		83%	87%	82%	78%	75%
High School GPA		3.39	3.41	3.40	3.32	3.38
Average ACT Composite		24.1	24.1	24.0	23.8	23.6
Percent with ACT of 21 or higher		80%	81%	82%	79%	77%
<b><u>ACT &amp; SAT Score Percentiles</u></b>						
ACT Composite	25th Percentile	21	21	21	21	21
	75th Percentile	27	26	26	26	26
ACT English	25th Percentile	21	21	21	20	20
	75th Percentile	28	28	27	27	27
ACT Math	25th Percentile	20	21	21	21	20
	75th Percentile	26	26	27	26	26
SAT Critical Reading	25th Percentile	470	450	480	450	460
	75th Percentile	580	580	590	550	600
SAT Math	25th Percentile	520	490	515	450	450
	75th Percentile	610	590	610	580	630
SAT Writing	25th Percentile	480	440	475	430	450
	75th Percentile	600	550	595	540	590
<b><u>Transfers</u></b>						
College GPA		3.19	3.26	3.20	3.19	3.16

**Demographic Profile of New Full-Time Undergraduates in Traditional Programs  
(Ethnicity, Gender, First-Generation Status, & In State/Out of State): Fall 2010 - Fall 2014**

Ethnicity	2010		2011		2012		2013		2014	
	Freshmen	Transfers	Freshmen	Transfers	Freshmen	Transfers	Freshmen	Transfers	Freshmen	Transfers
African American	17	12	31	17	40	12	33	8	30	11
American Indian/Alaskan Native	4	0	5	0	0	0	0	0	0	0
Asian American	20	7	24	16	29	14	22	13	29	13
Hawaiian-Pacific Islander	2	0	0	0	1	1	0	0	1	0
Hispanic	38	18	111	35	99	35	86	34	111	48
Nonresident Alien	3	13	0	1	0	13	0	7	0	6
Multiracial	8	4	30	3	20	3	25	8	17	8
White	437	260	401	225	368	227	331	193	315	194
Unknown	9	5	6	12	3	4	9	8	7	10
<b>Total</b>	<b>538</b>	<b>319</b>	<b>608</b>	<b>309</b>	<b>560</b>	<b>309</b>	<b>506</b>	<b>271</b>	<b>510</b>	<b>290</b>
No. of Students of Color	89	41	201	71	189	65	166	63	188	80
% of Students of Color	16.5%	12.9%	33.1%	23.0%	33.8%	21.0%	32.8%	23.2%	36.9%	27.6%
No. of Male Students	208	120	230	106	252	130	230	102	219	109
% of Male Students	38.7%	37.6%	37.8%	34.3%	45.0%	42.1%	45.5%	37.6%	42.9%	37.6%
No. of First-Generation Students	142	81	163	96	165	72	115	69	128	72
% of First-Generation Students	26.4%	25.4%	26.8%	31.1%	29.5%	23.3%	22.7%	25.5%	25.1%	24.8%
No. of Out-of-State Students	78	18	100	16	82	26	95	23	80	20
% of Out-of-State Students	14.5%	5.6%	16.4%	5.2%	14.6%	8.4%	18.8%	8.5%	15.7%	6.9%

### Undergraduate Degrees Awarded by First Major: 2009/2010 - 2013/2014

CIP	Major Code	First Major	2009/10	2010/11	2011/12	2012/13	2013/14
52.0301	ACC	Accounting	26	29	36	29	21
5.0102	AS	American Studies	1	1	0	0	0
45.0701	AGT	Applied Geospatial Technologies	0	0	3	1	0
50.0701	ART	Art	7	11	20	10	11
50.0704	AB	Art Business	0	1	4	3	1
13.1302	AED	Art Education	2	1	2	1	0
26.0101	BIO	Biology	33	32	34	28	34
52.0201	BAD/EMP	Business Administration	50	54	58	37	40
40.0501	CHM	Chemistry	9	9	8	6	8
51.0201	CSD	Communication Sciences & Disorders				2	9
9.0101	CST	Communication Studies	15	15	17	21	23
10.0304	CGE	Computer Game & Entertainment Tech	3	5	9	8	6
11.0701	CS	Computer Science	3	5	7	6	9
43.0103	CJ	Criminal Justice	2	10	25	22	23
13.1210	ECE	Early Childhood Education	9	7	8	7	2
45.0601	ECO	Economics	5	7	5	5	4
13.0101	EDU	Education	3	2	5	3	3
13.1202	EED	Elementary Education	47	34	54	40	36
23.0101	ENG	English	31	29	33	30	35
45.0701	EGS	Environmental Geosciences	0	0	0	0	0
31.0505	EXS	Exercise Science	23	22	23	37	43
52.0801	FIN	Finance	21	21	20	19	8
16.0901	FRN	French	0	0	1	0	1
45.0701	GEO	Geography & Environmental Planning	0	0	0	0	1
45.0701	GGG	Geography & Geosciences	9	8	4	3	0
16.0501	GRM	German	0	0	0	1	0
50.0409	GDS	Graphic Design				2	4
54.0101	HIS	History	17	24	25	24	16
11.0401	ISY	Information Systems	4	3	4	5	4
11.0103	IT	Information Technology	5	4	4	6	8
30.2301	ICS	Intercultural Studies	0	3	3	4	6
30.9999	ID	Interdepartmental	1	1	1	1	1
9.0199	INT	Interdisciplinary Communication Studies	16	20	26	13	18

CIP	Major Code	First Major	2009/10	2010/11	2011/12	2012/13	2013/14
52.1101	IBU	International Business	9	9	7	6	7
50.0910	JZS	Jazz Studies	5	4	1	4	0
24.0101	BLS	Liberal Studies	4	2	1	3	2
52.0203	LSM	Logistics & Supply Chain Management	6	7	8	10	7
52.0299	MGT	Management	19	24	28	22	19
9.0901	MC	Managerial Communication	12	18	15	10	5
52.1401	MKT	Marketing	26	21	36	30	31
27.0101	MTH	Mathematics	14	16	21	10	16
16.9999	ML	Multi-Language	2	0	2	1	0
50.0901	MUS	Music	0	3	6	6	2
50.0909	MUB	Music Business	15	15	21	10	13
13.1312	MED	Music Education	22	20	13	16	11
50.0501	MUR	Music Theatre	1	1	1	3	2
50.0901	MIC	Music/Individual Concentration	0	0	0	0	0
50.0904	MTC	Music/Theory & Composition	1	2	2	2	1
51.1601	NRS/BSN	Nursing	69	100	61	67	62
9.0901	ORC	Organizational Communication	6	3	11	7	7
9.0101	OLC	Org Leadership & Communication					5
38.0101	PHL	Philosophy	7	7	5	8	7
13.1314	PED	Physical Education	18	22	23	14	11
40.0801	PHY	Physics	4	7	3	3	6
45.1001	POL	Political Science	11	11	13	22	12
42.0101	PSY/APP	Psychology	58	60	59	71	82
38.0201	RLS	Religion and Service	1	1	4	1	0
39.0604	RSS	Religious Studies	3	4	3	4	1
45.1101	SOC	Sociology	10	11	17	13	10
16.0905	SPN	Spanish	8	2	11	6	5
13.1001	SED	Special Education	8	17	13	12	11
51.0203	SPP	Speech-Language Pathology	26	35	33	29	37
50.0501	STH/THE	Theatre	4	6	5	5	2
50.0501	TAE	Theatre Arts Education	0	1	0	0	0
39.0601	TCM	Theological Studies & Christian Ministry	1	1	2	0	1
39.0604	THL	Theology	1	1	0	0	0
45.1201	URB	Urban Studies	2	5	5	3	3
<b>All Programs in Total</b>			<b>715</b>	<b>794</b>	<b>869</b>	<b>772</b>	<b>753</b>

### Graduate Degrees Awarded by Major: 2009/2010 - 2013/2014

CIP	Major Code	Major	2009/10	2010/11	2011/12	2012/13	2013/14
52.0201	MBA	Business Administration	35	35	39	29	26
11.0901	CIS	Computer Information Systems	9	6	6	7	6
13.1210	MSE	Early Childhood Special Education	14	10	14	10	13
23.0101	MES	English Studies	10	5	7	8	6
42.0901	MIO	Industrial & Organizational Psychology	16	34	24	12	19
51.1601	MNR	Nursing	9	12	8	8	24
52.0301	MPA	Professional Accountancy	11	8	12	4	10
52.0203	MSM	Supply Chain Management	21	19	15	15	18
13.0101	MTL	Teacher Leadership	9	3	5	4	3
<b>All Programs in Total</b>			<b>134</b>	<b>132</b>	<b>130</b>	<b>97</b>	<b>125</b>

## One-Year Fall-to-Fall Retention Rates by Student Type: 2009/2010 to 2013/2014

Student Type	Fall 2009 - 2010			Fall 2010 - 2011			Fall 2011 - 2012			Fall 2012 - 2013			Fall 2013 - 2014		
	Total No.	No. Retained or Graduated	% Retained or Graduated	Total No.	No. Retained or Graduated	% Retained or Graduated	Total No.	No. Retained or Graduated	% Retained or Graduated	Total No.	No. Retained or Graduated	% Retained or Graduated	Total No.	No. Retained or Graduated	% Retained or Graduated
<b><u>Traditional Full-Time</u></b>															
New Freshmen	584	449	77%	538	429	80%	608	473	78%	560	438	78%	506	413	82%
New Transfers (Total)	267	233	87%	319	259	81%	309	250	81%	309	244	79%	271	207	76%
<i>Freshman</i>	28	25	89%	44	25	57%	39	27	69%	40	31	78%	38	24	63%
<i>Sophomore</i>	155	141	91%	142	123	87%	142	118	83%	122	98	80%	139	110	79%
<i>Junior</i>	63	56	89%	105	93	89%	106	90	85%	122	105	86%	79	65	82%
<i>Senior</i>	7	7	100%	10	10	100%	9	8	89%	7	7	100%	7	7	100%
Continuing (Total)	1909	1814	95%	1961	1850	94%	1983	1873	94%	1943	1810	93%	1878	1754	93%
<i>Freshman</i>	77	64	83%	77	60	78%	69	53	77%	84	58	69%	87	64	74%
<i>Sophomore</i>	525	484	92%	475	429	90%	474	432	91%	498	449	90%	462	415	90%
<i>Junior</i>	614	590	96%	656	629	96%	593	564	95%	573	540	94%	565	531	94%
<i>Senior</i>	674	664	99%	742	725	98%	827	811	98%	775	756	98%	757	740	98%
<b><u>Traditional Part-Time</u></b>															
New	45	10	22%	46	16	35%	32	4	13%	30	10	33%	23	4	17%
Continuing	109	77	71%	117	98	84%	117	90	77%	81	62	77%	80	64	80%
<b><u>Accelerated</u></b>															
New	40	21	53%	49	18	37%	36	21	58%	34	19	56%	46	30	65%
Continuing	138	106	77%	115	82	71%	105	82	78%	95	68	72%	96	67	70%
<b><u>Graduate</u></b>															
New	131	114	87%	146	123	84%	122	105	86%	123	105	85%	172	133	77%
Continuing	139	134	96%	139	131	94%	143	123	86%	123	108	88%	138	125	91%



**Six-Year Graduation Rates for Full-Time First-Time Bachelor's Degree-Seeking Students**  
**Entering Cohorts: Fall 2004 - Fall 2008**

Ethnicity		Fall 2004			Fall 2005			Fall 2006			Fall 2007			Fall 2008		
		Total No.	No. Graduated	% Graduated	Total No.	No. Graduated	% Graduated	Total No.	No. Graduated	% Graduated	Total No.	No. Graduated	% Graduated	Total No.	No. Graduated	% Graduated
African American	Female	14	2	14%	14	4	29%	8	2	25%	7	6	86%	10	8	80%
	Male	8	4	50%	18	9	50%	10	6	60%	5	2	40%	9	6	67%
	Total	22	6	27%	32	13	41%	18	8	44%	12	8	67%	19	14	74%
American Indian/ Alaskan Native	Female	1	1	100%	0			1	1	100%	0			0		
	Male	0			0			2	0	0%	0			1	1	100%
	Total	1	1	100%	0			3	1	33%	0			1	1	100%
Asian/Pacific Islander*	Female	8	3	38%	8	4	50%	17	10	53%						
	Male	2	1	50%	5	2	40%	5	4	80%						
	Total	10	4	40%	13	6	46%	22	13	59%						
Asian*	Female										15	9	60%	17	14	82%
	Male										14	9	64%	5	3	60%
	Total										29	18	62%	22	17	77%
Hawaiian-Pacific Islander*	Female										1	0	0%	0		
	Male										0			1	0	0%
	Total										1	0	0%	1	0	0%
Hispanic	Female	18	11	61%	16	10	63%	23	14	61%	23	18	78%	37	25	68%
	Male	6	3	50%	11	9	82%	9	7	78%	15	8	53%	17	10	59%
	Total	24	14	58%	27	19	70%	32	21	66%	38	26	68%	54	35	65%
Nonresident Alien	Female	0			0			8	4	50%	3	3	100%	2	2	100%
	Male	1	1	100%	1	1	100%	2	2	100%	1	1	100%	5	1	20%
	Total	1	1	100%	1	1	100%	10	6	60%	4	4	100%	7	3	43%
Multiracial	Female				6	5	83%	2	1	50%	8	6	75%	2	1	50%
	Male				4	3	75%	5	4	80%	9	5	56%	5	3	60%
	Total				10	8	80%	7	5	71%	17	11	65%	7	4	57%
White	Female	168	144	86%	227	175	77%	233	181	78%	240	190	79%	280	230	82%
	Male	132	83	63%	137	93	68%	147	110	76%	154	109	71%	179	115	64%
	Total	300	227	76%	364	268	74%	378	291	77%	394	299	76%	459	345	75%

Ethnicity		Fall 2004			Fall 2005			Fall 2006			Fall 2007			Fall 2008		
		Total No.	No. Graduated	% Graduated	Total No.	No. Graduated	% Graduated	Total No.	No. Graduated	% Graduated	Total No.	No. Graduated	% Graduated	Total No.	No. Graduated	% Graduated
Unknown	<i>Female</i>	16	11	69%	11	5	45%	4	4	100%	7	6	86%	7	7	100%
	<i>Male</i>	12	6	50%	8	5	63%	8	6	75%	6	4	67%	9	9	100%
	<i>Total</i>	28	17	61%	19	10	53%	12	10	83%	13	10	77%	16	16	100%
Overall	<i>Female</i>	225	172	76%	282	203	72%	296	216	73%	304	238	78%	355	287	81%
	<i>Male</i>	161	98	61%	184	122	66%	186	139	75%	204	138	68%	231	148	64%
	<i>Total</i>	<b>386</b>	<b>270</b>	<b>70%</b>	<b>466</b>	<b>325</b>	<b>70%</b>	<b>484</b>	<b>356</b>	<b>74%</b>	<b>508</b>	<b>376</b>	<b>74%</b>	<b>586</b>	<b>435</b>	<b>74%</b>

**Note:**

\*Prior to Fall 2007, the categories of Asian and Hawaiian-Pacific Islander were combined under the category of Asian/Pacific Islander

### Selected Degree-Seeking Undergraduate Activities & Characteristics: Fall 2010 - Fall 2014

Activity/Characteristic	2010		2011		2012		2013		2014	
	No.	%	No.	%	No.	%	No.	%	No.	%
All Degree-Seeking Undergraduate Students	3032	100%	3097	100%	2955	100%	2819	100%	2773	100%
Students Who Live in College-Owned, Operated or Affiliated Housing	1129	37.2%	1083	35.0%	1076	36.4%	1044	37.0%	994	35.8%
Students Who Live off Campus or Commute	1903	62.8%	2014	65.0%	1879	63.6%	1775	63.0%	1779	64.2%
Student Athletes (unduplicated)	420	13.9%	479	15.5%	452	15.3%	475	16.8%	490	17.7%
Female Students	1891	62.4%	1934	62.4%	1821	61.6%	1695	60.1%	1666	60.1%
Male Students	1141	37.6%	1163	37.6%	1134	38.4%	1124	39.9%	1107	39.9%
Students Aged 25 or Older	316	10.4%	320	10.3%	284	9.6%	260	9.2%	294	10.6%
Students from Illinois	2750	90.7%	2802	90.5%	2672	90.4%	2539	90.1%	2494	89.9%
Students from Out of State in the U.S.	268	8.8%	287	9.3%	275	9.3%	275	9.8%	272	9.8%
No. of States Represented (Illinois included)	31		34		35		35		36	
International Students with Non-U.S. Citizenship	88	2.9%	72	2.3%	81	2.7%	74	2.6%	66	2.4%
No. of Countries Represented (U.S. included)	39		35		36		34		31	
First-Generation Students	846	27.9%	822	26.5%	747	25.3%	702	24.9%	689	24.8%

### Cost of Attendance in Dollars: 2010/2011 - 2014/2015

	2010/11	2011/12	2012/13	2013/14	2014/15
<b><u>Full-Time Undergraduate Students</u></b>					
Tuition	28600	29994	31450	32720	33700
Fees	60	60	200	200	250
Tuition & Fees Total	28660	30054	31650	32920	33950
Books & Supplies	1000	1500	1500	1500	1500
Room, Board & Other Expenses (3 options)					
<b><i>1. On Campus</i></b>					
Room & Board	8216	8524	8838	9112	9386
Other Expenses	1624	1922	2012	2468	2444
Total	9840	10446	10850	11580	11830
<b><i>2. Off Campus (not with family)</i></b>					
Room & Board	5000	5500	5500	6000	6000
Other Expenses	3840	4446	4350	4580	4480
Total	8840	9946	9850	10580	10480
<b><i>3. Off Campus (with family)</i></b>					
Other Expenses	3840	4446	4350	4580	4480
<b><u>Part-Time Undergraduate Students</u></b>					
Per Credit Hour Charge	814	854	896	931	959
<b><u>Graduate Students</u></b>					
Average Per Credit Hour Charge (Actual charge varies by program)	700	700	750	750	750

## Employees by Tenure Status, Occupational Category, & Full-Time/Part-Time Status: 2013-2014

Occupational Category	Tenured		On Tenure Track		Not on Tenure Track		Without Faculty Status		Category Total		
	Full Time	Part Time	Full Time	Part Time	Full Time	Part Time	Full Time	Part Time	Full Time	Part Time	Total
Primarily Instruction	88	2	38	0	32	191	6	0	164	193	357
Archivists, Curators, & Museum Technicians							1	0	1	0	1
Librarians	6	0							6	0	6
Library Technicians							4	0	4	0	4
Student & Academic Affairs & Other Edu. Services Occupations							3	0	3	0	3
Management Occupations	5	0					33	0	38	0	38
Business & Financial Operations Occupations							21	0	21	0	21
Computer, Engineering, & Science Occupations							14	0	14	0	14
Community Service, Legal, Arts, Sports & Media Occupations							36	0	36	0	36
Healthcare Practitioners & Technical Occupations							5	0	5	0	5
Service Occupations									52	9	61
Sales & Related Occupations									0	0	0
Office & Administrative Support Occupations									99	28	127
Natural Resources, Construction, & Maintenance Occupations									15	0	15
Production, Transportation, & Material Moving Occupations									1	11	12
<b>Total</b>									<b>459</b>	<b>241</b>	<b>700</b>

### Employees by Tenure Status, Occupational Category, & Full-Time/Part-Time Status: 2012-2013

Occupational Category	Tenured		On Tenure Track		Not on Tenure Track		Without Faculty Status		Category Total		
	Full Time	Part Time	Full Time	Part Time	Full Time	Part Time	Full Time	Part Time	Full Time	Part Time	Total
Postsecondary Teachers	84	3	35		28	226	6		153	229	382
Archivists, Curators, & Museum Technicians	1						1		2	0	2
Librarians	5							6	5	6	11
Library Technicians							1		1	0	1
Other Teachers & Instructional Support Staff									0	0	0
Management Occupations	7						25	1	32	1	33
Business & Financial Operations Occupations							8		8	0	8
Computer, Engineering, & Science Occupations							15	2	15	2	17
Community Service, Legal, Arts, & Media Occupations							32		32	0	32
Healthcare Practitioners & Technical Occupations							5	5	5	5	10
Service Occupations									50	16	66
Sales & Related Occupations									0	0	0
Office & Administrative Support Occupations									132	30	162
Natural Resources, Construction, & Maintenance Occupations									14	0	14
Production, Transportation, & Material Moving Occupations									1	12	13
<b>Total</b>									<b>450</b>	<b>301</b>	<b>751</b>

**Undergraduate Alumni by State of Residence**  
(as of November 2013)

State	No. of Alumni	% of Alumni	State	No. of Alumni	% of Alumni	State	No. of Alumni
Illinois	18732	61.0%	Washington	106	0.3%	Oklahoma	20
Unavailable	6318	20.6%	New York	101	0.3%	Mississippi	19
Florida	537	1.7%	Maryland	83	0.3%	Utah	17
Wisconsin	534	1.7%	New Jersey	81	0.3%	Hawaii	15
California	486	1.6%	Oregon	69	0.2%	South Dakota	13
Texas	322	1.0%	Kentucky	68	0.2%	West Virginia	12
Michigan	315	1.0%	South Carolina	67	0.2%	District of Columbia	11
Arizona	301	1.0%	Nevada	66	0.2%	Idaho	11
Indiana	295	1.0%	Massachusetts	53	0.2%	Maine	11
Missouri	278	0.9%	Kansas	48	0.2%	Rhode Island	10
Ohio	235	0.8%	Arkansas	47	0.2%	Delaware	8
Colorado	198	0.6%	Connecticut	40	0.1%	Vermont	8
Minnesota	166	0.5%	Nebraska	36	0.1%	Wyoming	8
Georgia	152	0.5%	Foreign Countries	32	0.1%	North Dakota	3
North Carolina	143	0.5%	New Mexico	30	0.1%	Alaska	2
Tennessee	125	0.4%	Alabama	29	0.1%		
Iowa	124	0.4%	New Hampshire	25	0.1%	<b>Total</b>	<b>30694</b>
Pennsylvania	124	0.4%	Louisiana	21	0.1%		
Virginia	119	0.4%	Montana	20	0.1%		