



STAFF EDITOR: KARINA RIVERA

MAY 2021

Special Graduate Issue



NEW MEMBER RETREAT 2017

CONGRATULATIONS
TO OUR 2021
HONORS PROGRAM
GRADUATES!

*Cue the
Confetti!*

Dear Honors Program Graduates of the Class of 2021,

Congratulations on your outstanding achievement!

Earning Honors Program distinction along with your degree – often with double majors, numerous campus commitments, outside jobs, family obligations – *is no small feat!*

I know this year-end has been particularly challenging in so many ways! I am truly sorry that your College experience is not concluding as you had hoped and planned and dreamed for many years.

But I believe that you all have great things ahead of you. Many of you are going on for graduate and professional degrees; several have secured terrific new jobs; some are understandably anxious about securing jobs, but all should be basking in the glory of your terrific finish.

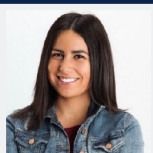
I am SO proud of each one of you! I have thoroughly enjoyed getting to know you these past two, three, or four years – watching you grow into outstanding young people in pursuit of your unique passions, traveling with some of you, advising many of you, teaching some of you, and learning much from all of you!

I trust that wherever your paths may lead, you will remain intellectually curious as lifelong learners. I hope that you are forever proud of being an Elmhurst University graduate and that you will use your finely honed skills and knowledge to make this world a much better place for all!

Fondly,

Dr. Mulvaney





Who are our graduates?

SARA ACOSTA, BUSINESS ADMINISTRATION, MEMBER

AFAAF AMATULLAH, ENGLISH & PHILOSOPHY, SCHOLAR

HEATHER ANDERSON, MUSIC ED, SCHOLAR

JUSTINE BALOUSEK, NURSING, SCHOLAR

ABIGAIL BAUMANN, PSYCHOLOGY, MEMBER



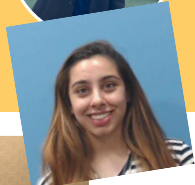
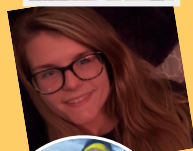
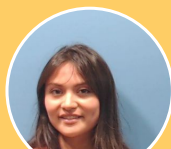
GUADALUPE BOLLAS, PSYCHOLOGY, MEMBER

ELENA CABRERA, ACCOUNTING & FINANCE, MEMBER

AMANDA CHAPMAN,
LOGISTICS & SUPPLY CHAIN MNGMT,
SCHOLAR

KENNETH DANTES, ENGLISH, GLOBAL SCHOLAR

NEELAM JOSHI, BIOLOGY, SCHOLAR



Special GRADUATE ISSUE

DUE TO THE PANDEMIC, ONLY 23% OF OUR GRADUATES STUDIED AWAY, BUT NEARLY 60% CONDUCTED RESEARCH!

Here are some places our graduates traveled.

ROME

PRAGUE

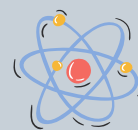
BERLIN

MARTINIQUE

AMSTERDAM

ARGENTINA

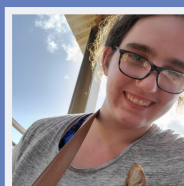
59% OF OUR GRADUATES CONDUCTED RESEARCH



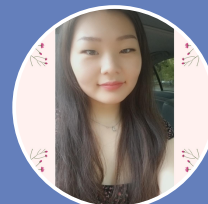
Here are some research topics our graduates selected.

- Utilizing Quartz Crystal Microbalance to Screen for Waterborne Petroleum Hydrocarbons
- Understanding Gendered Digital Sex Work through OnlyFans and Twitter
- Shakespeare's Ghosts: Tracing back to the Danse Macabre
- Phylogenetic analysis of coronavirus spike protein sequences among animal hosts
- Social Exclusion, Animacy, and Memory
- The Effects of a Natural Environment on College Students' Psychological Distress

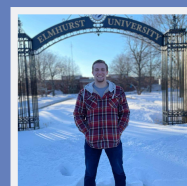
WHO ARE OUR GRADUATES?



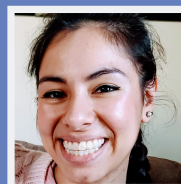
MARISA KARPES
ENGLISH
GLOBAL SCHOLAR



NICOLE KIM
NURSING
SCHOLAR



JEFF MCCURRY
CJ & BUSINESS ADMIN
MEMBER



FRIDA MERAZ
PSYCHOLOGY
SCHOLAR



COLIN MERGEN
SPORT MNGMT
MEMBER

24 DIFFERENT MAJORS REPRESENTED

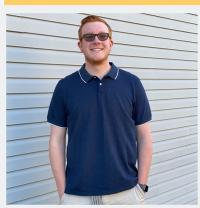
20% of our graduates have more than one major.

Accounting BS
Art BA
Biochemistry BS
Biology BA, BS
Business Administration BS
CSD BA
Computer Science BS
Criminal Justice BA
English BA
Finance
History BA
Intercultural Studies
Interdisciplinary Communication BA, BS
International Business BS
Logistics and Supply Chain Management BS
Management BS
Mathematics BS
Music Education SPC12 BM
Nursing BSNRS
Philosophy
Political Science BS
Psychology BA, BS
Sport Management BA
Urban Studies

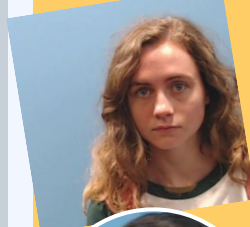
SPECIAL CONGRATS TO OUR DECEMBER 2020 GRADS!

EMILY BAXA, CSD, GLOBAL SCHOLAR
MEGAN DUFOUR, INTERDISCIPLINARY COMM, MEMBER
SARAH LEHMANN, INTERDISCIPLINARY COMM, MEMBER
RACHEL MAZUREK, BIOLOGY, GLOBAL SCHOLAR
MICHAEL MUELLER, BIOLOGY, SCHOLAR
RACHEL SHUTY, MANAGEMENT, MEMBER

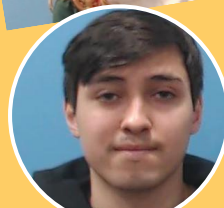
WHO ARE OUR GRADUATES?



ZACHARY MIETZNER,
COMPUTER SCIENCE, MEMBER



MELISSA MORRISSEY, HISTORY,
MEMBER



ENRIQUE MUNOZ,
CRIMINAL JUSTICE, SCHOLAR



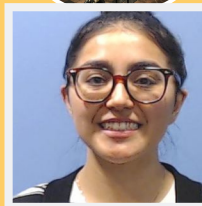
JOSHUA NICHOLS,
PSYCH & INTERCULTURAL STUDIES,
GLOBAL SCHOLAR



COURTNEY O'DONNELL,
BIOCHEM & PSYCH,
SCHOLAR



MARISOL ORNELAS, NURSING,
MEMBER



MARY OVAN, PSYCHOLOGY,
SCHOLAR



VALENTINA POGGI, BIOLOGY,
MEMBER



GRETA QANO,
POLI SCI, BUSINESS ADM,
URBAN STUDIES,
SCHOLAR

Special GRADUATE ISSUE

WHO ARE OUR GRADUATES?



JASON RHODES
INTERNATIONAL BUSINESS &
FINANCE
MEMBER



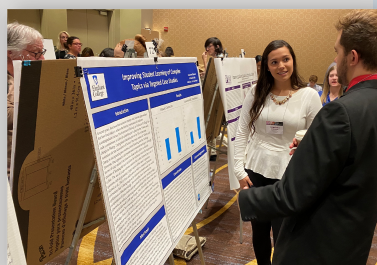
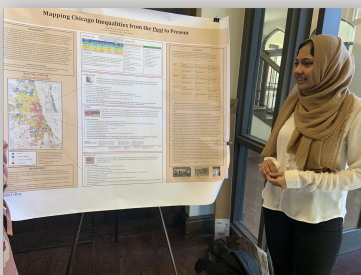
MARIA ROMERO-LUTHER
ART
MEMBER



**RACHEL
SHERMAN**
ENGLISH
MEMBER



**KATHLEEN
SAVERINO**
PSYCHOLOGY
SCHOLAR



WHAT'S AHEAD?



Read what some of our graduates shared about their plans post-graduation!

"I've accepted a job at Vista Trans Holding working as a Logistics Coordinator. I'll be starting right after graduation. I'll also be getting my Masters in Supply Chain Management at Elmhurst University and I start the program in the Fall of 2021." -**Amanda Chapman**

"I will be starting a Teaching Assistant Program In France (TAPIF) with the French government on October 1st." -**Victoria Spiker**

"I've accepted a job as a full-time Floater Production Assistant for NBC's Chicago Fire, having already started April 5th. I have also been admitted to Middlebury College's Bread Loaf Summer School of English Masters Program at their Oxford University Campus. I've deferred to attend in person next summer." -**Kenneth Dantes**

"I am currently in my first year of veterinary school at the University of Illinois College of Veterinary Medicine. I enrolled in Elmhurst's 3 + 4 affiliation program with the University of Illinois College of Veterinary Medicine. In four years, I will graduate as a DVM (Doctor of Veterinary Medicine)!" -**Valentina Poggi**

"I have accepted a job at Tracy Cross & Associates Inc. as a research associate, starting on June 16, 2021." -**Sara Acosta**

WHO ARE OUR GRADUATES?



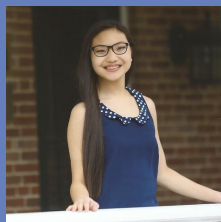
ROXANNE SIUDA
BIOCHEMISTRY
SCHOLAR



VICTORIA SPIKER
PSYCHOLOGY
GLOBAL SCHOLAR



JACLYN STEARS
NURSING & PSYCH
SCHOLAR



**ANASTASIA
STRAH**
MATHEMATICS
MEMBER



**AASIYAH
WASIF**
ENGLISH
MEMBER